

# DreamPro3 Installation Instructions

## Index

Guangzhou Youshuo DreamPro3 Programmer Driver Installation .....	2
How to Confirm the Windows System is 32 bit or 64 bit?.....	7
How to Disable Driver Signature .....	8

# Guangzhou Youshuo DreamPro3 Programmer Driver Installation

1. Digital seal verification is required due to the current Windows 7 (64-bit), Windows 8.1, Windows 10 system installation co-operation vendor drive. Before installing the driver using Windows 7, Windows 8.1, and Windows 10 systems, be sure to **turn off the system's digital seal certification before installing the driver.**



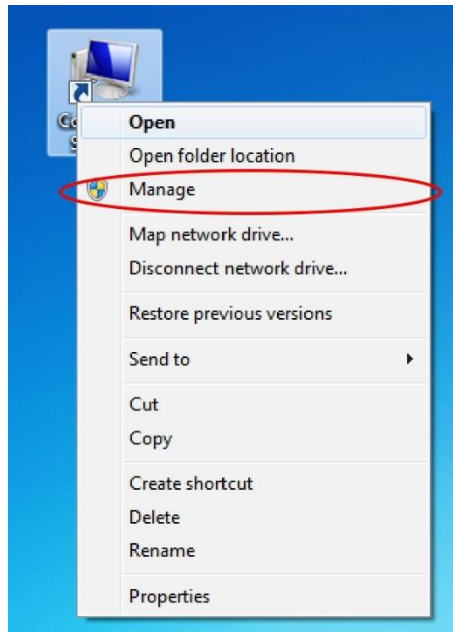
2. Guangzhou Youss GZUT Dreampro3 programmer now offers a green version of the burning software, but before using the driver must be installed.
3. Download the burner software and depress the tape, and English users directly into the Chinese catalog.

名稱	修改日期	類型	大小
DreamPro3_CN_中文版	2019/8/15 上午 0...	檔案資料夾	
DreamPro3_EN	2017/1/16 下午 0...	檔案資料夾	
其他说明	2017/1/20 下午 0...	檔案資料夾	

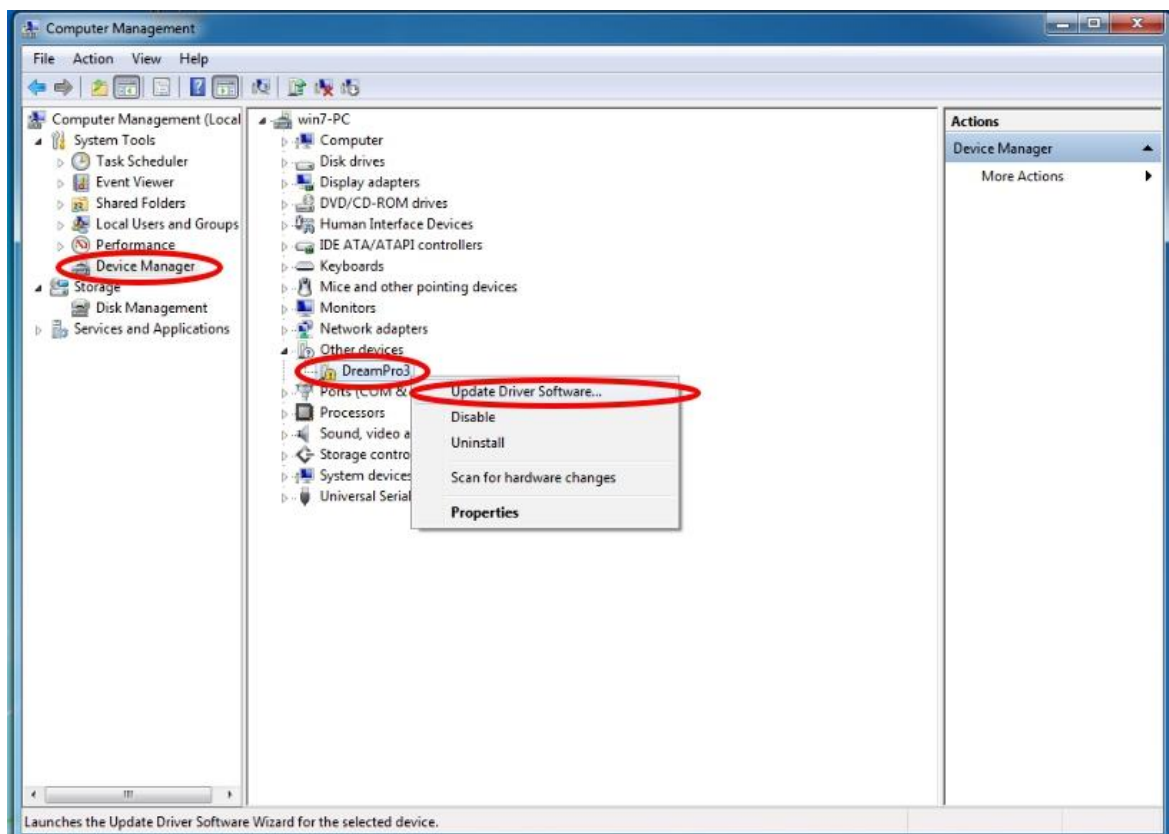
4. Plug the programmer into the USB port to connect computer, it is recommended to use USB 2.0 port instead of USB 3.0 port. Connections with USB hubs (USB HUB) are strictly prohibited and the programmer will not be recognized. Do not plug in the USB port in front of the computer host case, try to plug directly into the native USB port on the motherboard.

名稱	修改日期	類型	大小
CODE	2017/1/10 上午 1...	檔案資料夾	
DreamPro3_32_bits driver		32-bit system driver directory	
DreamPro3_64_bits driver		64-bit system driver directory	
sound	2017/1/10 上午 1...	檔案資料夾	
TTL_Driver	2017/1/10 上午 1...	檔案資料夾	
database.dat	2017/1/20 上午 0...	DAT 檔案	41 KB
DreamPro3	2015/9/6 下午 05...	編譯的 HTML 說...	5,516 KB
DreamPro3		Compilation software	2,612 KB
ftext	2015/6/19 下午 0...	組態設定	3 KB
gzu_tek.dll	2012/2/9 上午 09...	應用程式擴充	67 KB
itext	2015/6/19 上午 1...	組態設定	6 KB
log	2019/7/26 下午 0...	文字文件	3 KB
toolkitpro1501vc60.dll	2014/5/22 下午 0...	應用程式擴充	7,508 KB
u_tek0.dll	2015/6/19 上午 1...	應用程式擴充	0 KB
u_tek1.dll	2019/7/26 下午 0...	應用程式擴充	8,192 KB
utek2.dll	2015/3/24 下午 0...	應用程式擴充	1 KB

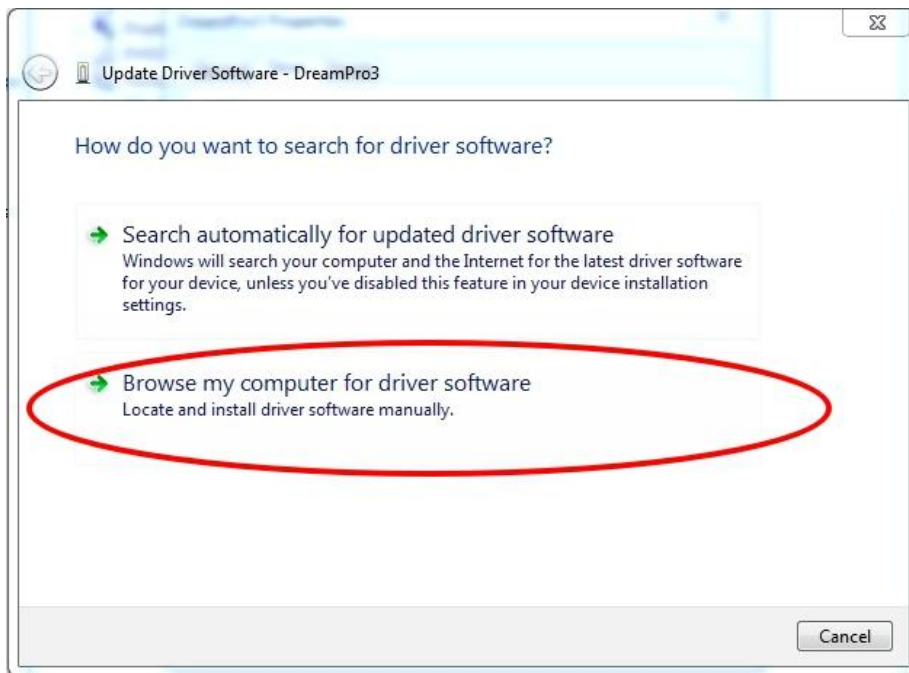
5. After plug in the USB programmer, the computer will prompt to find new hardware. Do disable the drive digit seal before installing the driver!!!
6. Click on the new device prompt in the lower right corner of the desktop to pop up the drive installation window.
7. Right-click on "Computer" or "My Computer" and select "Manage".



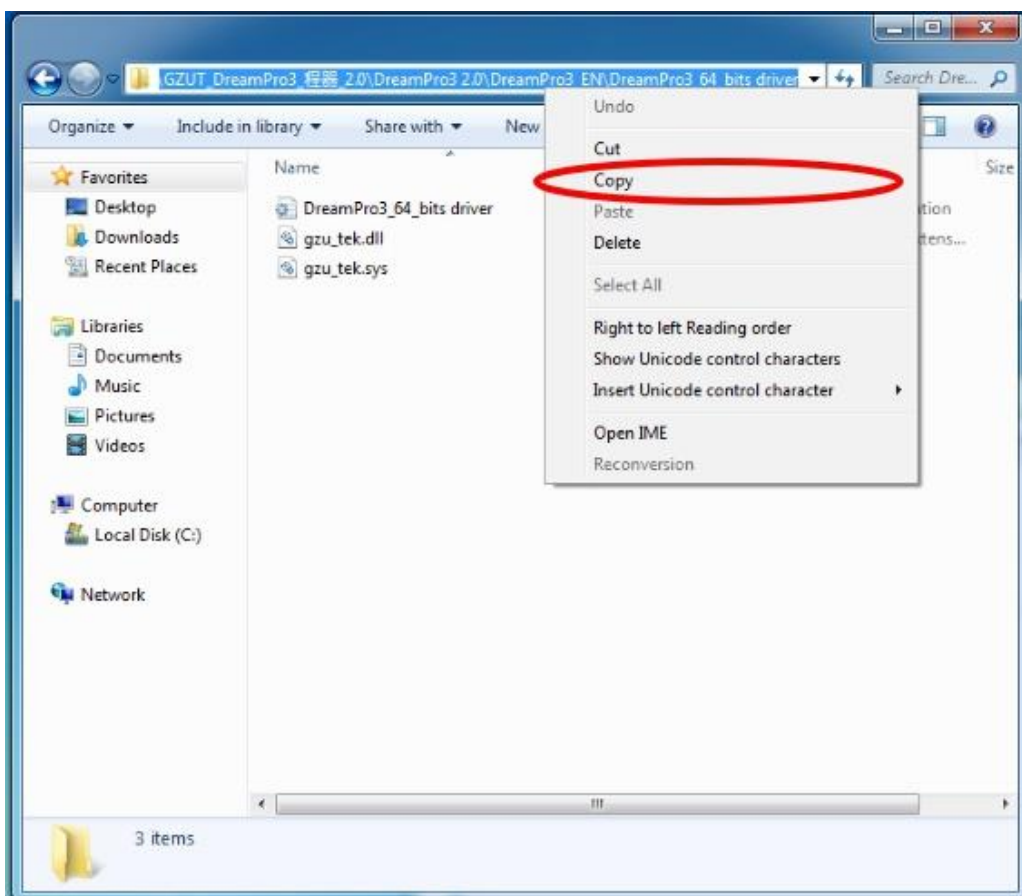
8. After finding the DreamPro3 in Device Manager, right-click the mouse, select "Update driver software".



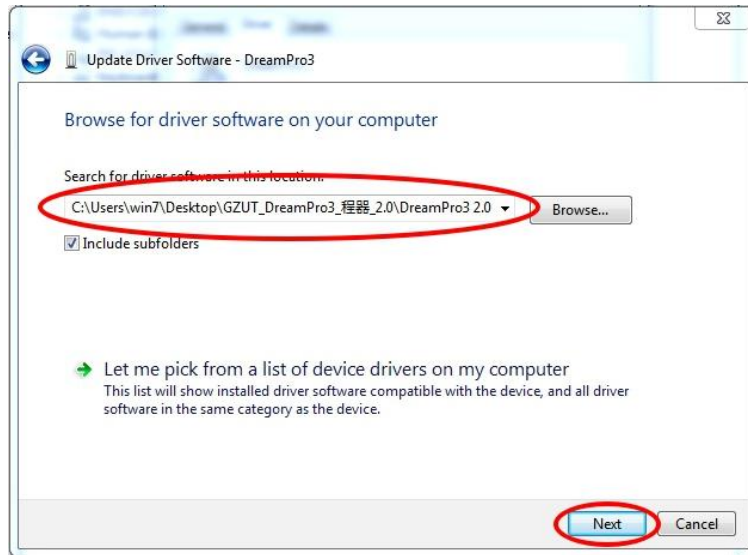
9. Select "Browse my computer for driver software".



10. Select the corresponding driver directory based on your own windows system with 32-bit or 64-bit.



11. After the software driver, click "next" for the driver installation.



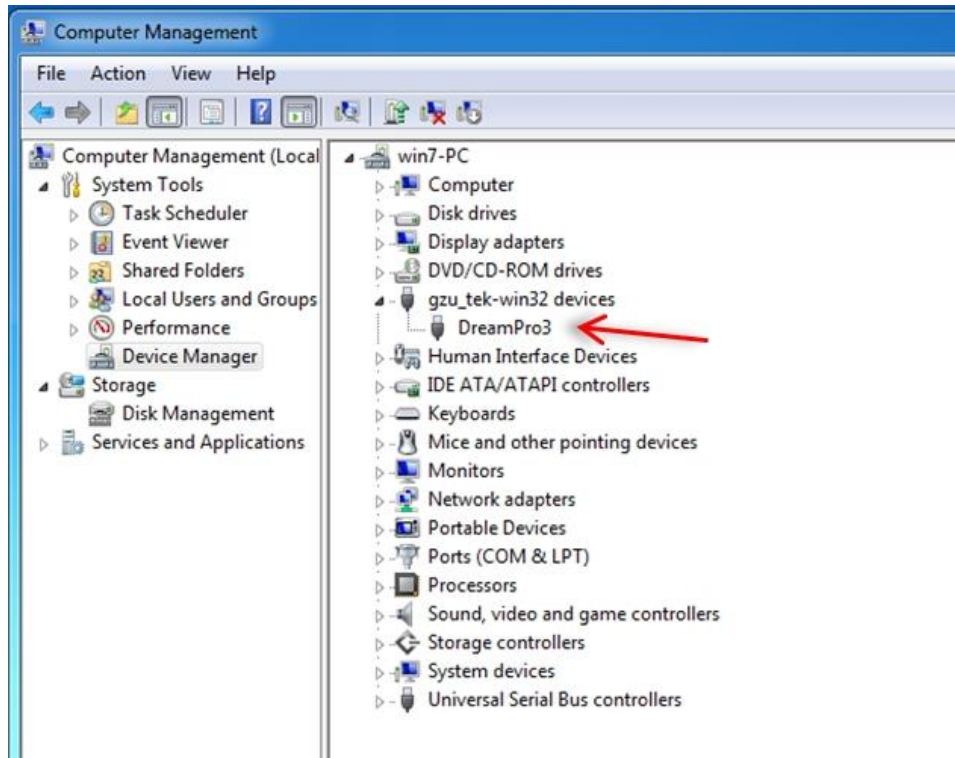
12. During the installation process, a prompt window will pop up with the point "Install this driver software anyway".



13. Driver successfully installed

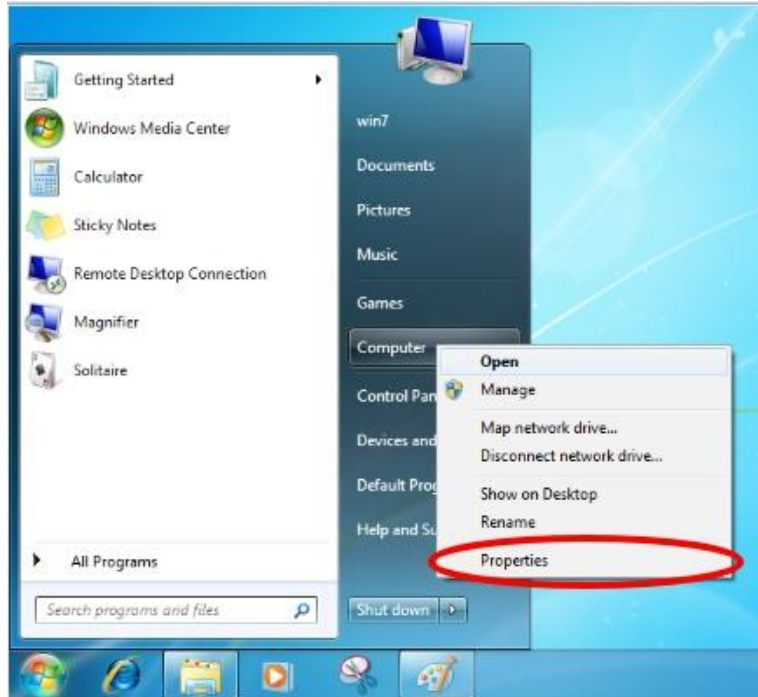


14. Once the drive installation is successful, it is sufficient to run the programmer software directly.

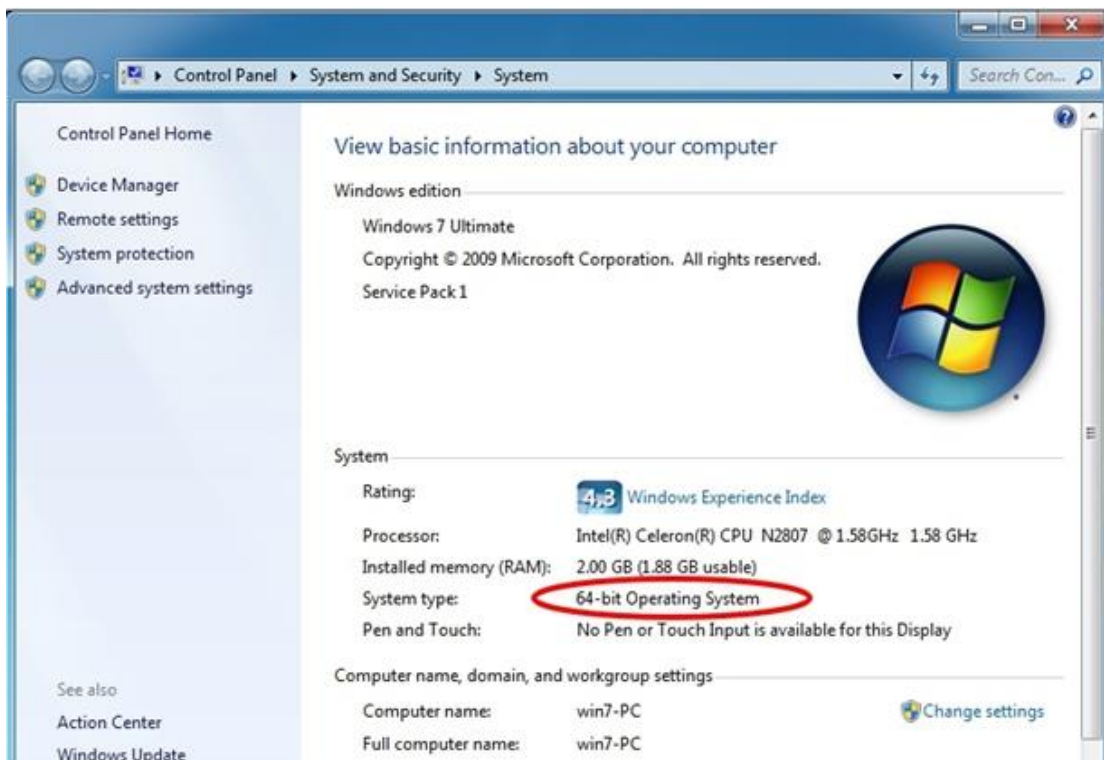


# How to Confirm the Windows System is 32 bit or 64 bit?

1. Right-click on "Computer" and select the "property".



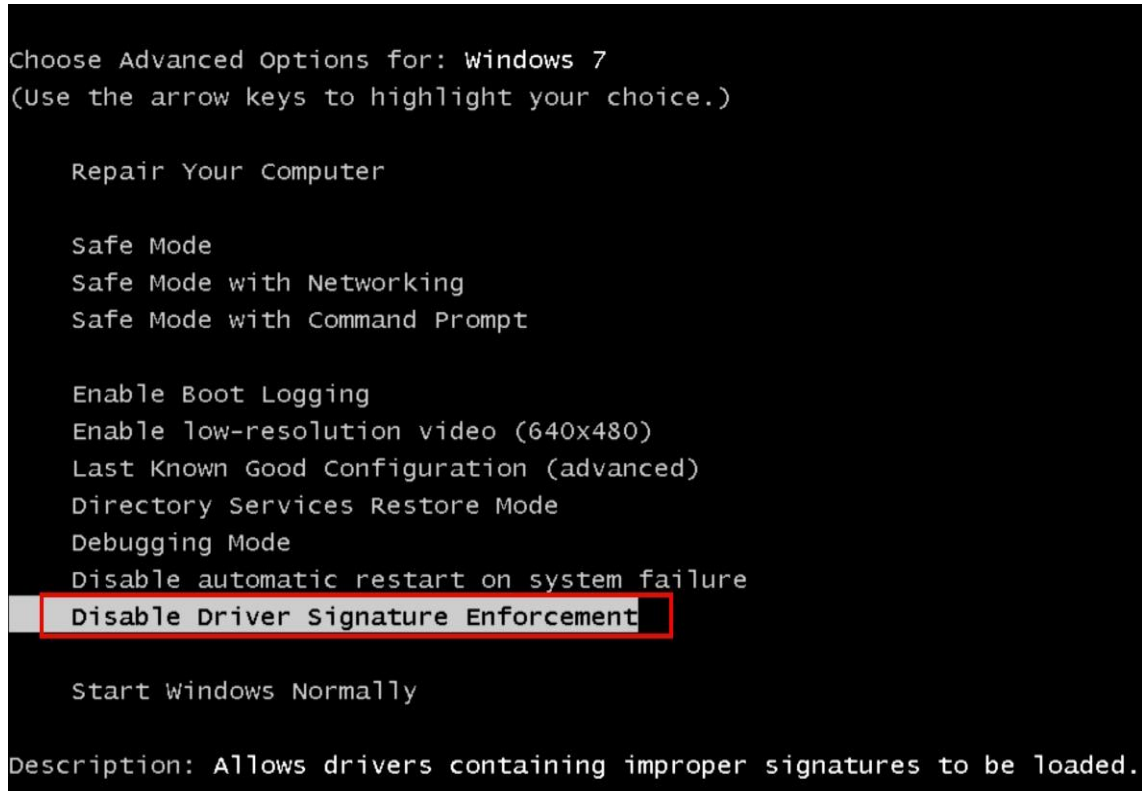
2. The Windows version and System type are shown in the pop-up property window.



## [How to Disable Driver Signature](#)

### **[Windows 7 64-bit System] (32-bit system can be directly installed driver)**

1. Before booting into the system, press the F8 key to enter the boot selection menu.
2. Select the last item "Disable Driver Signing Enforcement".
3. After disabling the driver signature, start the system and re-run the "Flash Writer Driver Installation".



```
Choose Advanced Options for: Windows 7
(Use the arrow keys to highlight your choice.)

Repair Your Computer

Safe Mode
Safe Mode with Networking
Safe Mode with Command Prompt

Enable Boot Logging
Enable low-resolution video (640x480)
Last Known Good Configuration (advanced)
Directory Services Restore Mode
Debugging Mode
Disable automatic restart on system failure
Disable Driver Signature Enforcement
Start Windows Normally

Description: Allows drivers containing improper signatures to be loaded.
```

### **[Windows 8.1 System]**

1. Start the computer and enter the Win8.1 desktop.
2. Press the keyboard Win key + C key, the menu pops up on the right side of the desktop, click the "set" gear icon.
3. After entering the setup menu, select "Update and Restore" (usually at the bottom).
4. Click "Restore" and select the "Restart Now" button under the "Advanced Startup" option.
5. Click "Troubleshooting" and then click on "Advanced Options".
6. Select "Startup Settings".
7. Pop up the startup settings menu, click the "Restart" button below.
8. A menu will pop up before restarting, press 7 with the keyboard, select "Disable driver forced signature", the system will automatically restart.
9. When the system is restarted and the instrument is installed, when the security prompt pops up, select "Always install this driver software".




## **【Windows 10 system】**

### **Windows 10: Disable Signed Driver Enforcement**

#### ***How can I install drivers that are not digitally signed?***

Windows 10 enforces driver signatures by default. This can be disabled to install drivers that are not digitally signed. Use the following steps to disable driver signature enforcement.

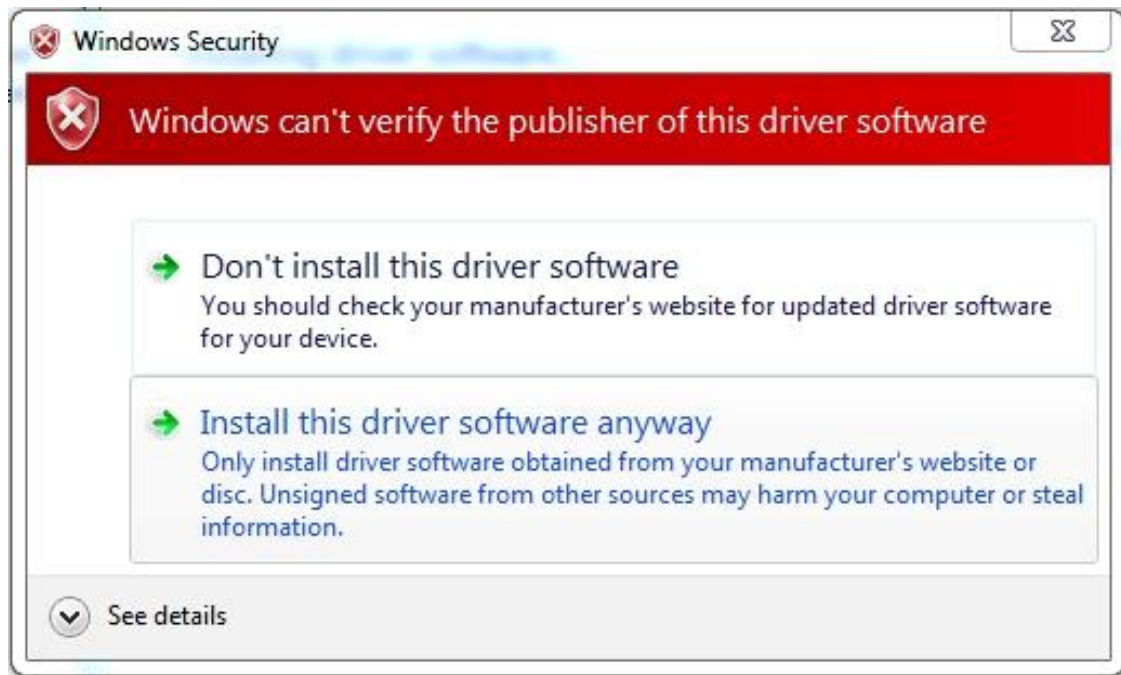
1. Click the **Start**  **menu** and select **Settings**.
2. Click **Update and Security**.
3. Click on **Recovery**.
4. Click **Restart now** under **Advanced Startup**.
5. Click **Troubleshoot**.
6. Click **Advanced options**.
7. Click **Startup Settings**.
8. Click on **Restart**.
9. On the Startup Settings screen press 7 or F7 to disable driver signature enforcement.

Your computer will restart and you will be able to install non-digitally signed drivers. If you restart your computer again the driver signature enforcement will be re-enabled.

=====

1. Click on the start menu, click on the computer settings inside, if not, click on all applications, find and click on the computer settings
2. In the computer settings interface, click on the left side of the update and recovery (Update and recovery)
3. In the update and recovery interface, click on the left side of the recovery (Recovery), in the right window to find the Advanced startup (Restart now) under the restart (Restart now), click to restart the computer immediately
4. After the computer restarts, select an option interface, click on the troubleshooting
5. In the troubleshooting interface, click on the advanced option
6. In the advanced options interface, click on the startup settings.
7. In the startup settings interface, find and click to restart
8. The computer will restart again. After restarting, in the startup setting interface, click "Disable driver forced signature"!

**If prompted during the installation: " **Install this driver software anyway** ", select "Always install this driver software" to continue the installation**



Remarks: Windows 7 · Windows 8 · Windows 10 system

(Because some system permissions are too high, the system intercepts the running of some programs)

- \* File open error, can not read and write files
- \* File drag and drop invalid
- \* No desktop icon generated
- \* Open the software prompt missing files

**Solution:**

1. The burning software is placed on the D drive or other disk, not the C drive.
2. Create a new folder under the C drive or other disk, and install it to the newly created folder to solve it. Do not install it in the default system directory.

**\* Some computers need to be run as an administrator when the runtime is installed.**