



AiSEMI one vox

Smart Attendance and Temperature Screening System

- World Premiere Smart Attendance System and Temperature Screening System with VOx (Vanadium Oxide) Sensor Element
- Fast Response, High Accuracy and Good Temperature Stability
- **On-Premise Network to Secure Personal Data**
- Efficient Attendance System
- Face Recognition Access Control System
- Support Multi-door (6 doors) Access Control Management
- 10.1" Welcome Board and Signage
- 10,000 Face Database and 100,000 Measurement Data Capacity
- Support Multi-Factor Authentication

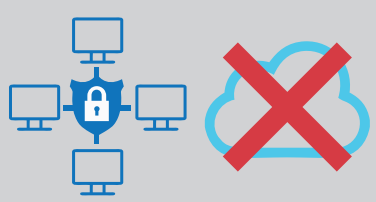


Instant notifications from smart phones for checking personal attendance

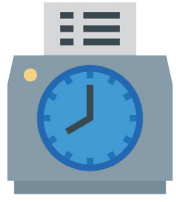
08:47	Message	
Susan	2021-02-19	
On Duty	08:45:27	
On Duty Temp.	36.5°C	
Off Duty		
Off Duty Temp.		
Access Record	08:45:30	



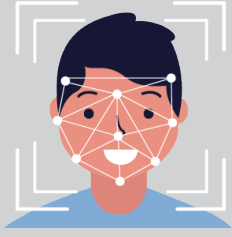
HR department can export attendance records from back end any time



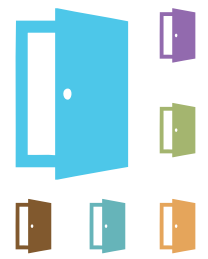
On-Premise Network



Attendance System



ARM Based CPU Plus NPU (3 TOPs)



Multi-door Access Control Management



Body Temperature Screening



100,000 Temperature Measurement Data



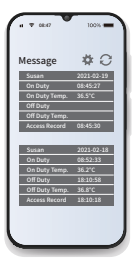
Mask-Wearing Alarm



Multi-Factor Authentication



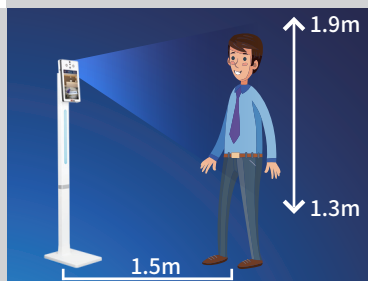
Touch-Free



Instant Notifications from Smart Phones



Welcome Board and Signage



Wide Viewing Angle Measurement

Main System

ARM CPU plus Neural-network Processing Unit (NPU, 3 TOPs)

Onboard 2GB RAM and 8GB ROM

Temperature Measurement

Temperature Range : 30°C ~ 45°C (86°F ~ 113°F)

Sensor : VOx (Vanadium Oxide bolometer sensing element)

Resolution : 80 × 62 pixel

Frame Rate : 25 fps (max.)

Measurement Deviation : ± 0.3°C

Measuring Distance (ToF Sensor) : 0.5 ~ 1.5m

Screen

Size : 10.1inch

Camera

Effective pixel : 2 megapixel, support WDR (Wide Dynamic Range) 100dB, Anti-Backlight

LED

2* 1W LED Fill Light (Auto)

LED welcome light and indicator for authentication status (Blue, Green, and Red)

Speaker

1* 3W Speaker

Network

Wired Network : Support 10/100/1000 Mbps self-adaptive

WiFi 2.4GHz, 802.11b/g/n

Interface

1* Reset

1* RJ45

1* USB2.0

1* Access Control Interface (Wiegand / Binary Switch / RS485)

1* DC 12V Power

1* Micro USB (OTG)

1* Volume Adjustment

Capacity

10,000 Face Database, 100,000 attendance and temperature measurement data

Authentication

Face Recognition Duration : <0.1s per person

Face Recognition Distance : 0.5 ~ 1.5m

Face Recognition Accuracy Rate ≥ 99%

Multiple Authentication Modes : Face and Temperature, Face and Temperature and Mask, etc.

NFC Card Function (Optional)

Others

Power Supply : DC12V / 2A

Working Temperature : 15°C ~ 35°C (59°F ~ 95°F)

Working Humidity : 10 ~ 90% (no condensation)

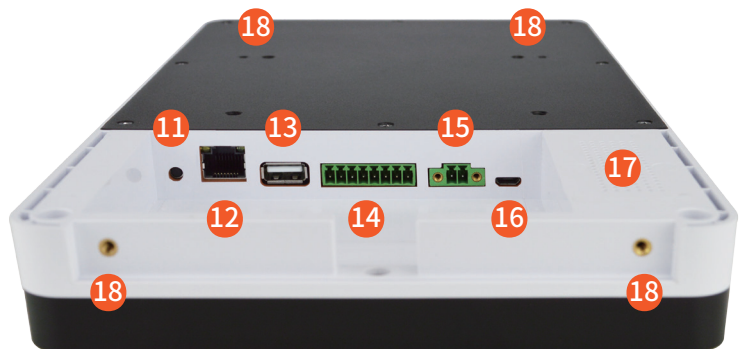
Application Environment : Indoor and windless environment use only

Certification : CE, FCC, BSMI

Package and Weight : 104 x 42 x 15cm, 9.8kg



- ① Attendance and Access Control System
- ② Temperature Screening System
- ③ Welcome Board and Signage
- ④ Welcome Light and Access Indicator
- ⑤ Stand
- ⑥ RJ45 / Power / Access Control Interface
- ⑦ VOx Thermal Sensor
- ⑧ Fill Light
- ⑨ Camera
- ⑩ Volume Adjustment
- ⑪ Reset
- ⑫ RJ45
- ⑬ USB2.0
- ⑭ Access Control Interface
- ⑮ DC 12V Power
- ⑯ Micro USB (OTG)
- ⑰ Speaker
- ⑱ Wall-mount Screw Hole



Jetway Information Co., Ltd.
 9F, No.207, Sec. 3, Beixin Rd., Xindian Dist., New Taipei City, 23143, Taiwan
 +886-2-8913-2711
 aisemi-sales@jetway.com.tw
 www.jetwayipc.com



Authorized Distributor