

# Quick Installation Guide

---



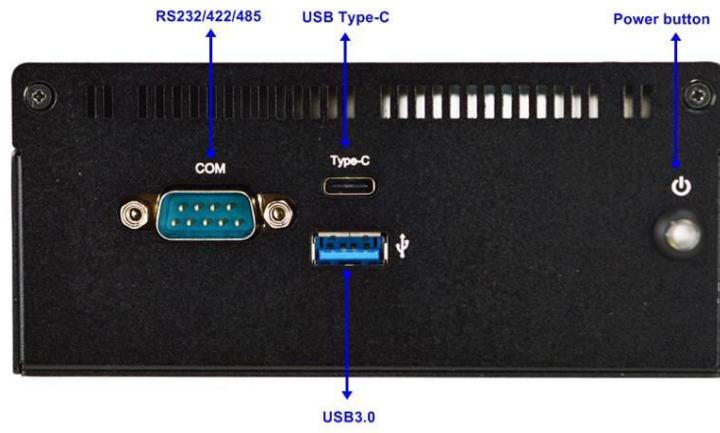
**NO. G03-FBMU02QIG-F**

**Manual Revision: 2.0**

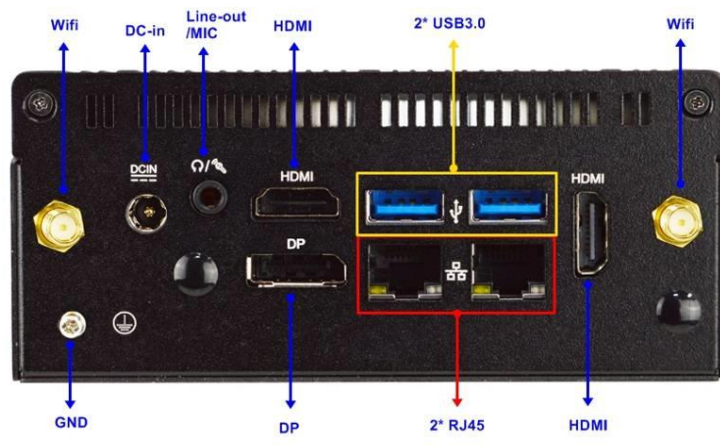
**Release Date: March 27, 2023**

# I/O Outlets

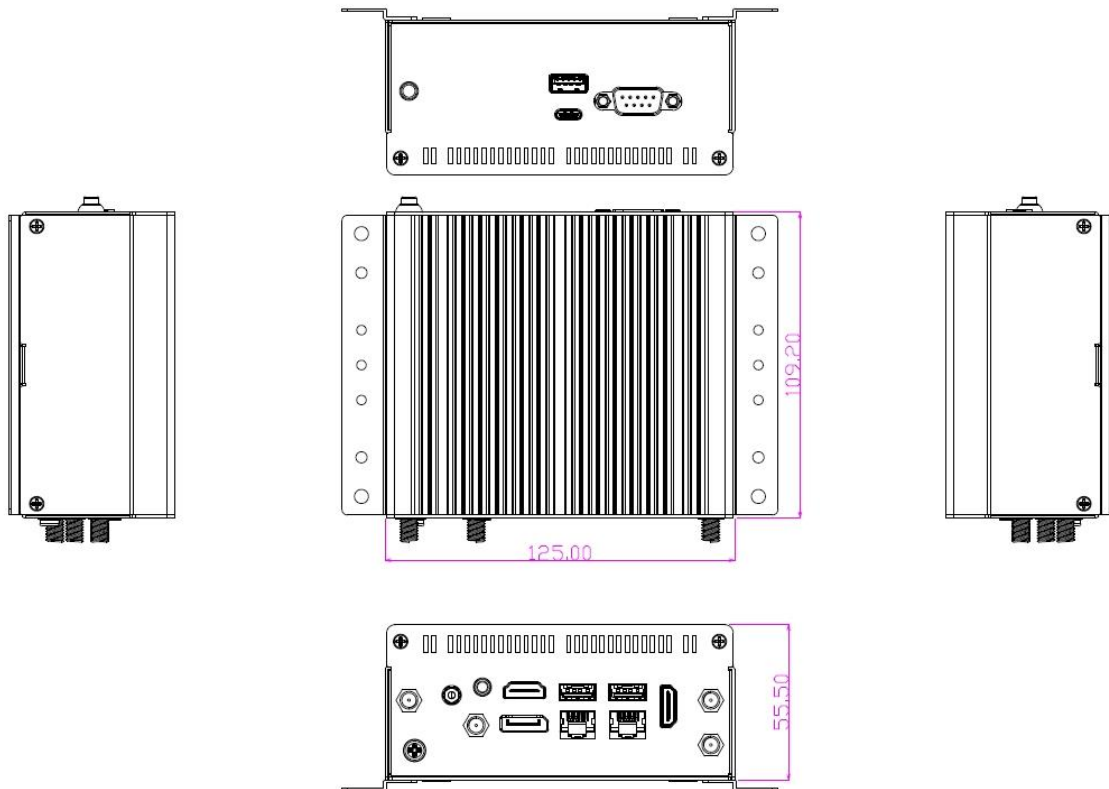
## Front



## Rear



## Dimension and Outlines



### I. To Disassemble the Chassis



1. Put the system upon a stable platform with this side up, as the photo shows. Locate the screws at the spots marked on the cover and unscrew them one by one to open the chassis.

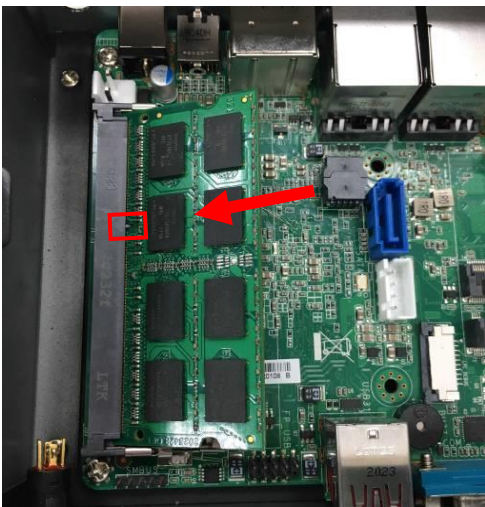


2. The internal structural view of the system for further intallation.

## **II. To Install SO-DIMM to the Board**

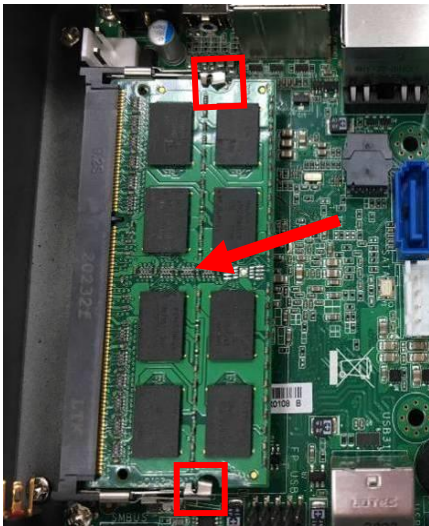


1. Locate the SO-DIMM slot on the board.



2. Insert the gold-figure side of the compatible SO-DIMM into the slot at a 30 degree angle. See to it that the break of the module fit into the notch of the slot.





3. Press down to secure the SO-DIMM to the slot. The eject tabs will lock automatically if installing direction is correct.

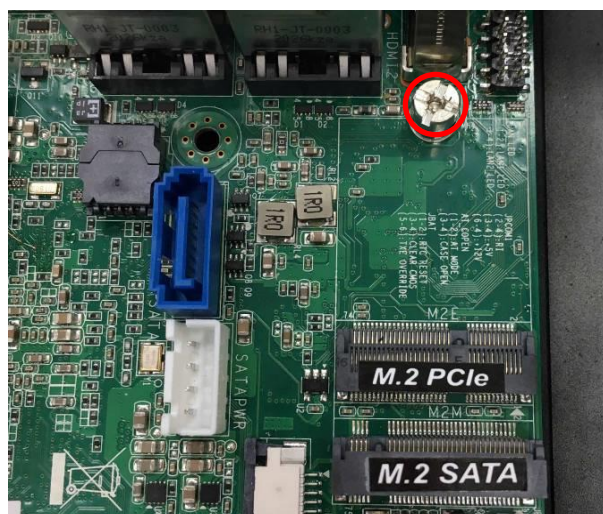
### **III. To Install M.2 PCIe Wi-Fi Card**



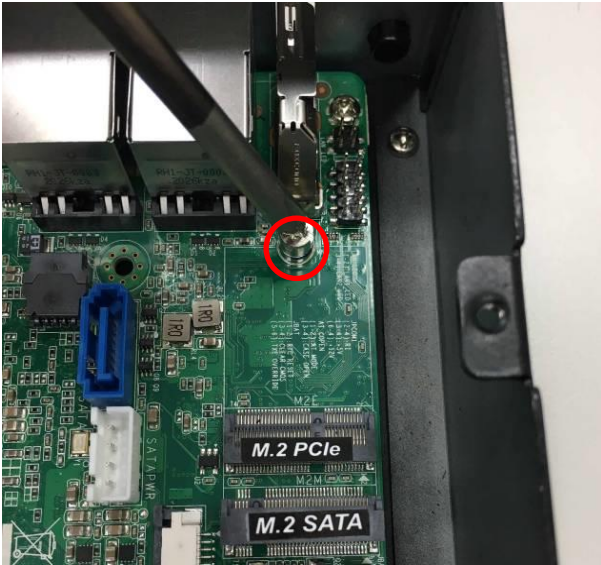
1. Locate the M.2 PCIe slot on the board.



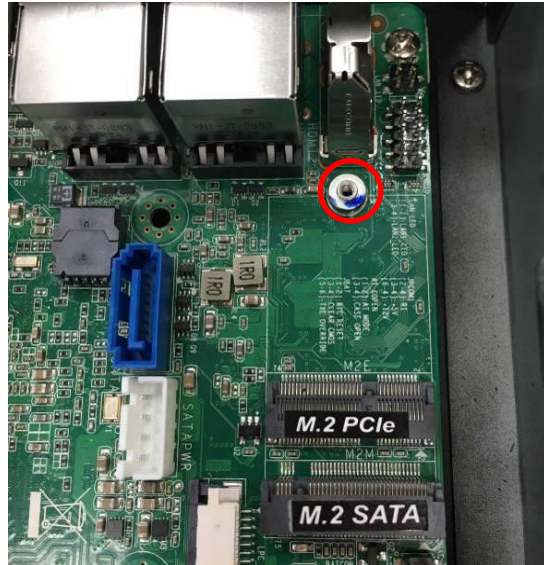
2. Remove the marked screw with a screwdriver.



3. To install M.2 PCIe card, user need to remove the screw bolt as well.



4. Use a compatible screwdriver to remove the screw bolt.



5. The screw bolt needs to be removed to install M.2 PCIe card.



6. Insert the gold-figure side of compatible M.2 PCIe card into the slot until the golden finger side fully emerged into the slot.

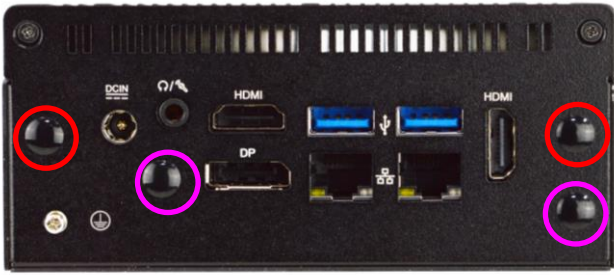


7. Install the screw bolt back to the original spot.

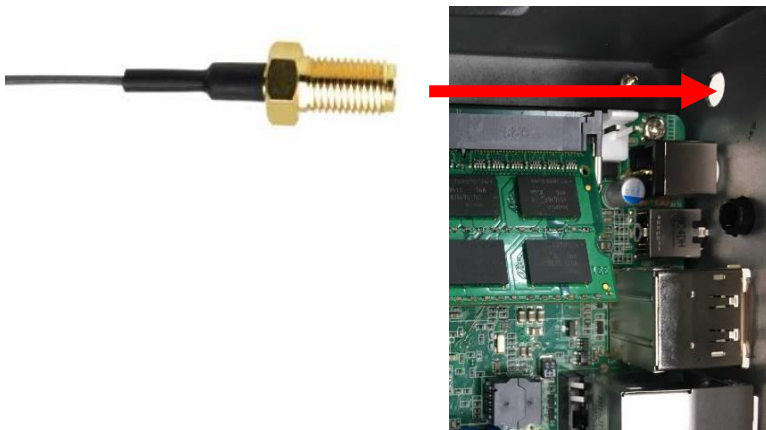


8. Press the metal hat on the end of the antenna string to corresponding antenna slot on the card as showed.





9. Locate the reserved antenna holes on the rear panel. Remove the dust-proof plugs from the panel to install the antenna, as the following details show.



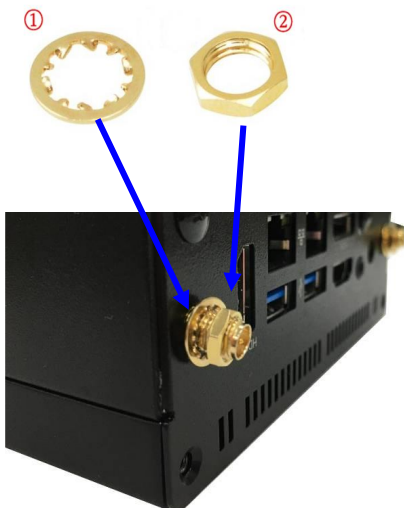
10. Push this antenna head into antenna hole of the rear panel from the backside of the panel.

10-1

10-2



The washer①&the hexagonal screwnut②. Push the washer①through the antenna head.



11. Push the washer①through the antenna head.And then lock the antenna head to the front side of the rear panel with the hexagonal screw nut②and tighten it up.

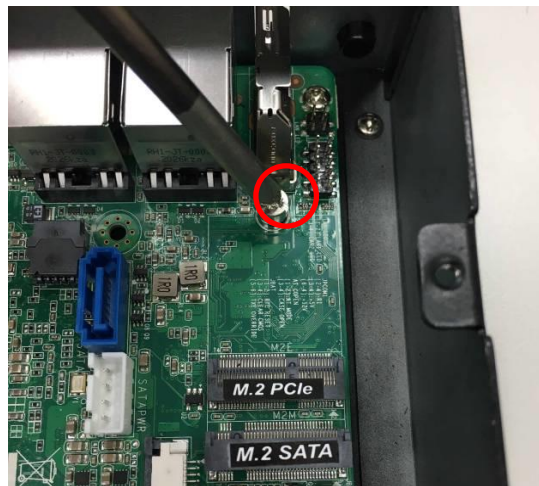


12. Connect the external Wi-Fi receiver antenna to the antenna screw head on the rear panel.

#### **IV. To Install M.2 SATA Card**



1. Locate Mini-SATA slot on the board.



2. Remove the marked screw and use it to lock M.2 SATA card to the slot in later installation.

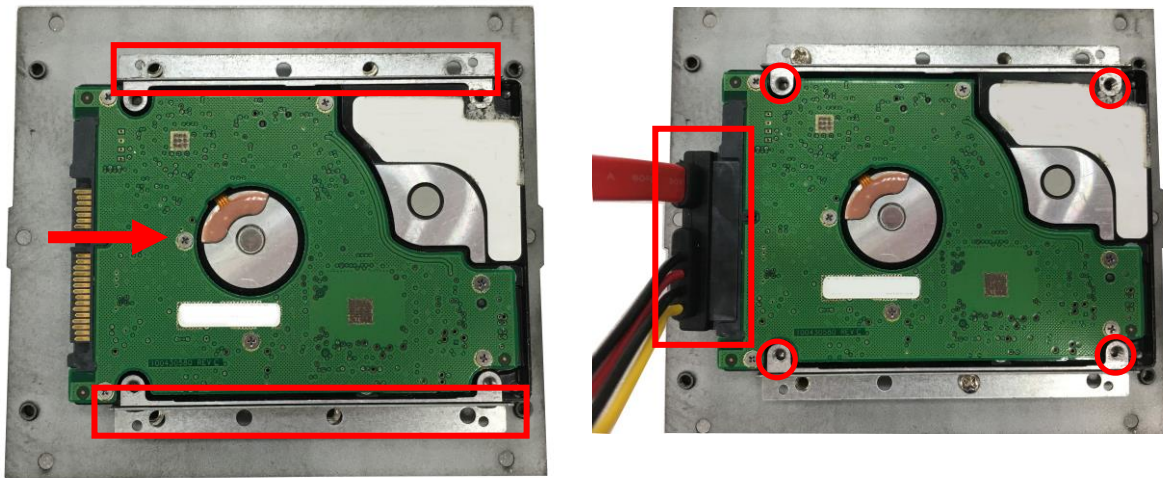


3. Insert the gold-figure side of compatible M.2 SATA card into the slot until the golden finger side fully emerged into the slot.

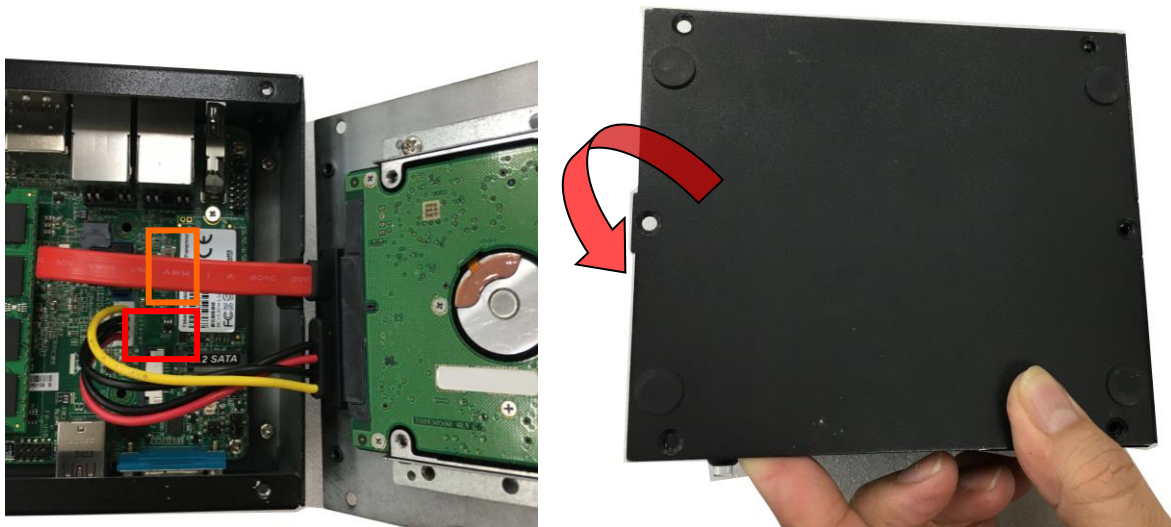




## V. To Install Hard Disk



1. The cover already has the HDD racks installed 2. Plug this side of the cable to SATA power-in connector in advance. User just need to push compatible and SATA connector into the hard disk. HDD in the direction showed until the screw holes of the HDD matched with those from the racks.



3. Plug SATA power connector and SATA port 4. Adjust the cables and turn over the cover to connector into corresponding connectors reassemble the chassis. onboard.

## Regulatory Compliance:

### Disclaimer

This QIG is intended to be used as a practical and informative guide only and is subject to change without prior notice. It does not represent commitment from Jetway Information Co., Ltd. Jetway shall not be liable for direct, indirect, special, incidental, or consequential damages arising out of the use of the product or documentation, nor for any infringements upon the rights of third parties, which may result from such use.

### Declaration of Conformity

#### FCC Statement

This equipment has been tested and found to comply with the limits for a Class A digital device, pursuant to part 15 of the FCC Rules. These limits are designed to provide reasonable protection against harmful interference when the equipment is operated in a commercial environment.

This equipment generates, uses, and can radiate radio frequency energy and, if not installed and used in accordance with the instruction manual, may cause harmful interference to radio communications. Operation of this equipment in a residential area is likely to cause harmful interference in which case the user will be required to correct the interference at user's own expense.

*\*Note: 1. Any changes or modifications not expressly approved by the party responsible for compliance could void the user's authority to operate the equipment. 2. Shielded interface cables must be used in order to comply with the emission limits.*

#### CE Notice

The product described in this QIG complies with all applicable European Union (CE) directives if it has a CE marking. For computer systems to remain CE compliant, only CE-compliant parts may be used. Maintaining CE compliance also requires proper cable and cabling techniques.

