

Quick Installation Manual



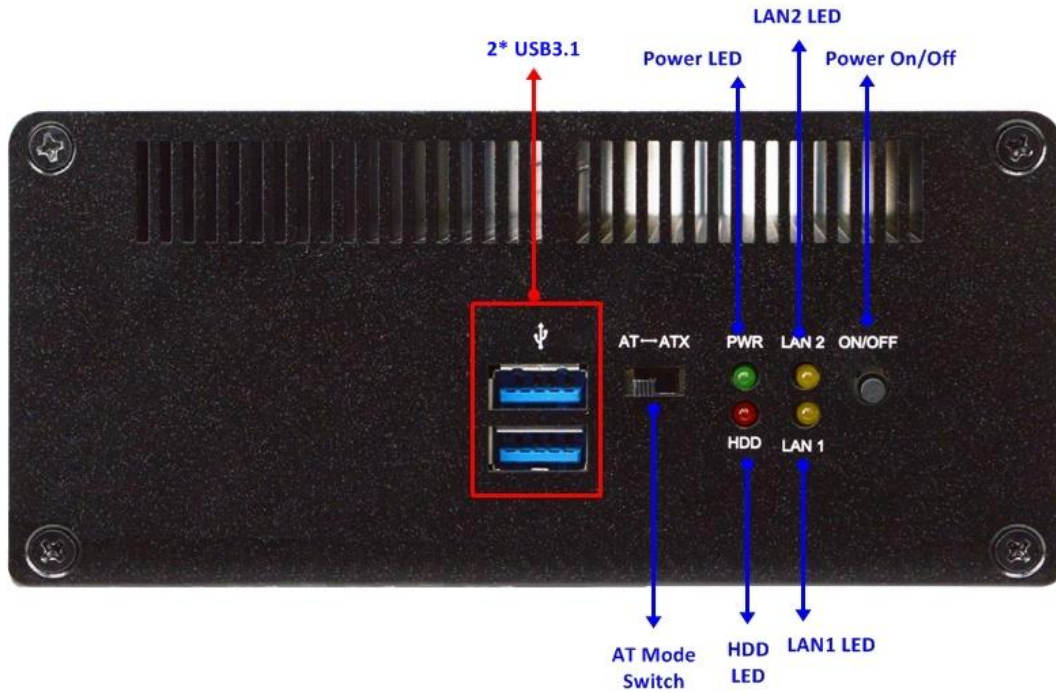
NO. G03-FCMT95-F

Manual Revision: 1.0

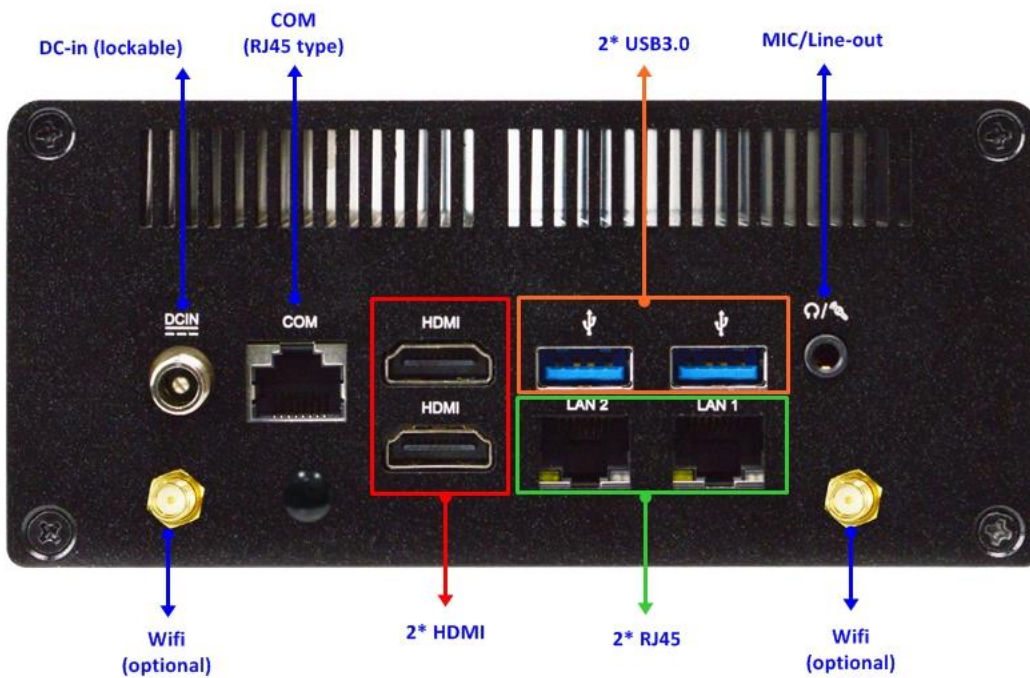
Release Date : March 3, 2020

I/O Outlets

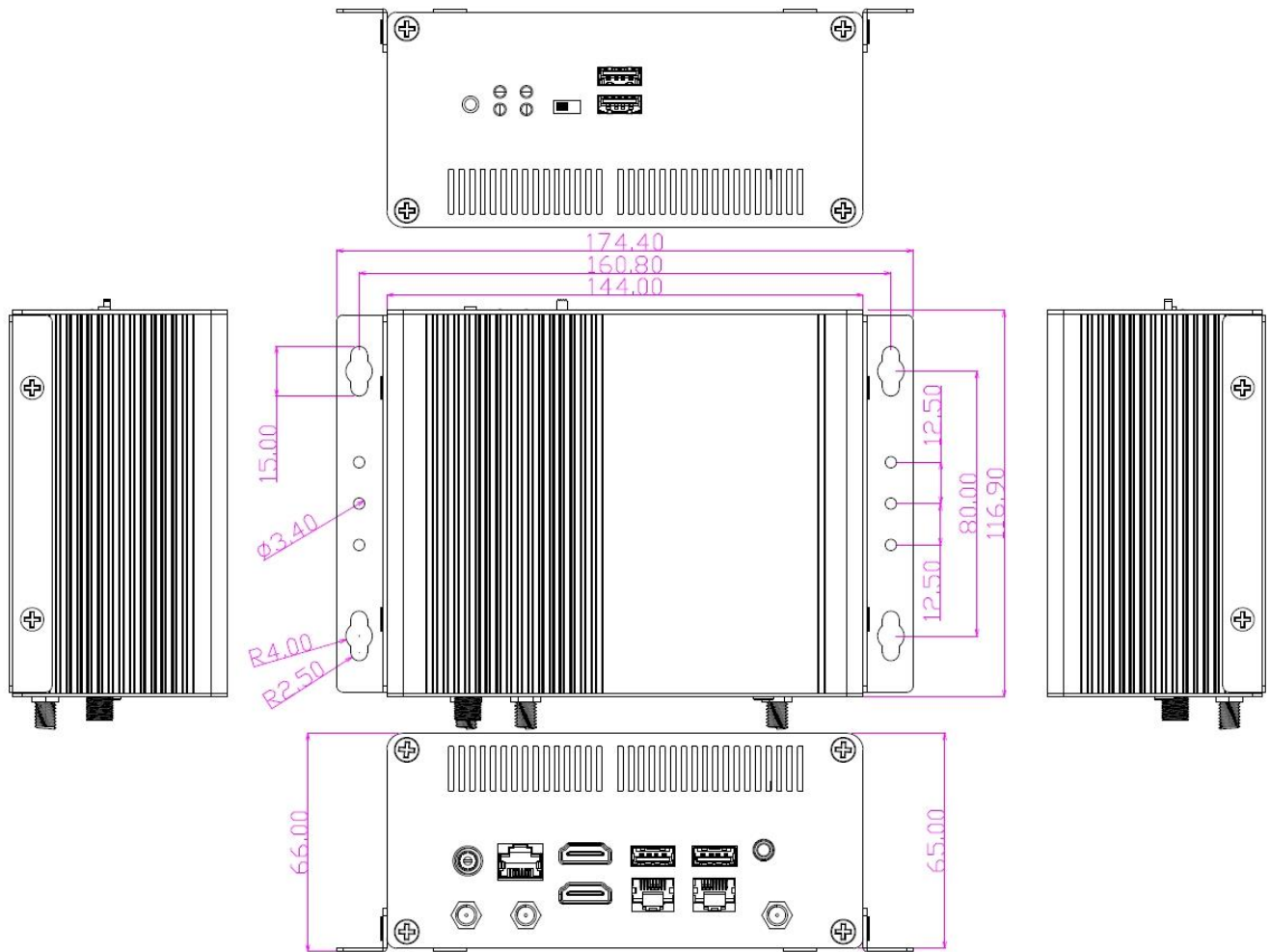
Front



Rear



Dimension and Outlines



1. To disassemble the Chassis



1. Locate the screws at the spots marked on this side of the system and unscrew them one by one.

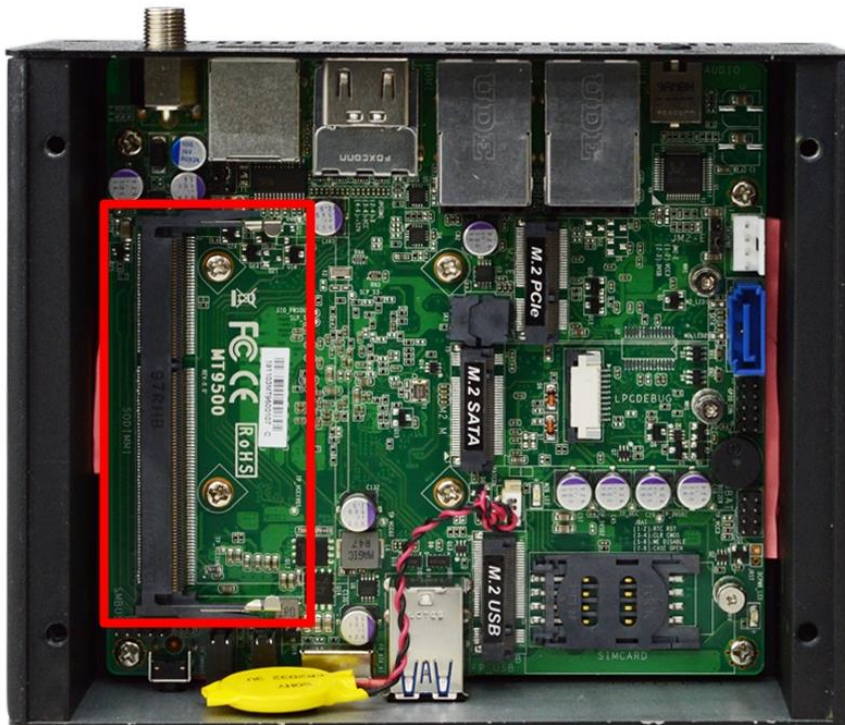


2. Lift the cover up to open the chassis.

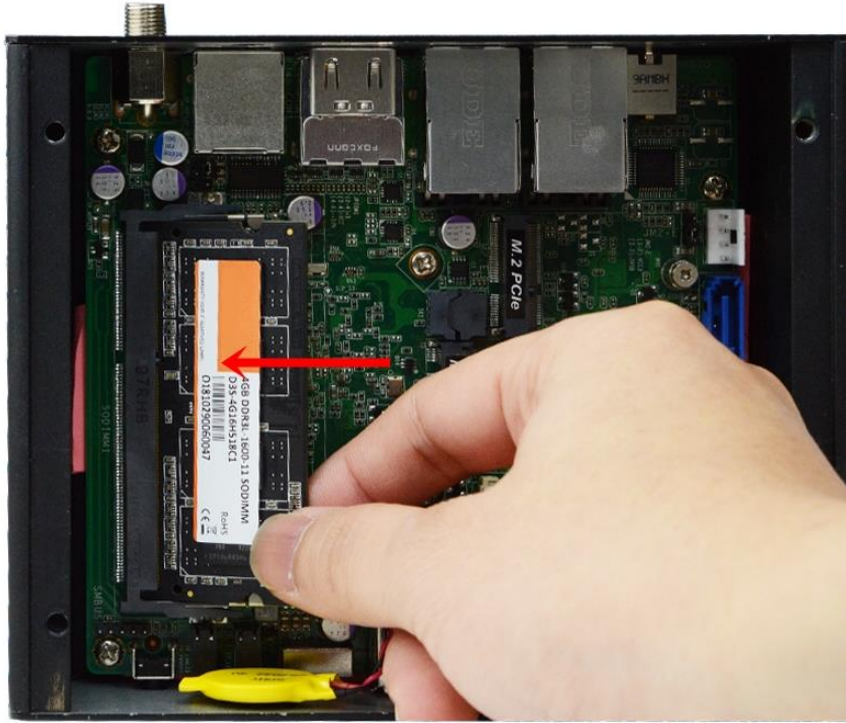


3. The internal structural view of the system for further intallation.

II. To Install SO-DIMM to the board



1. Locate the SO-DIMM slot on the board.

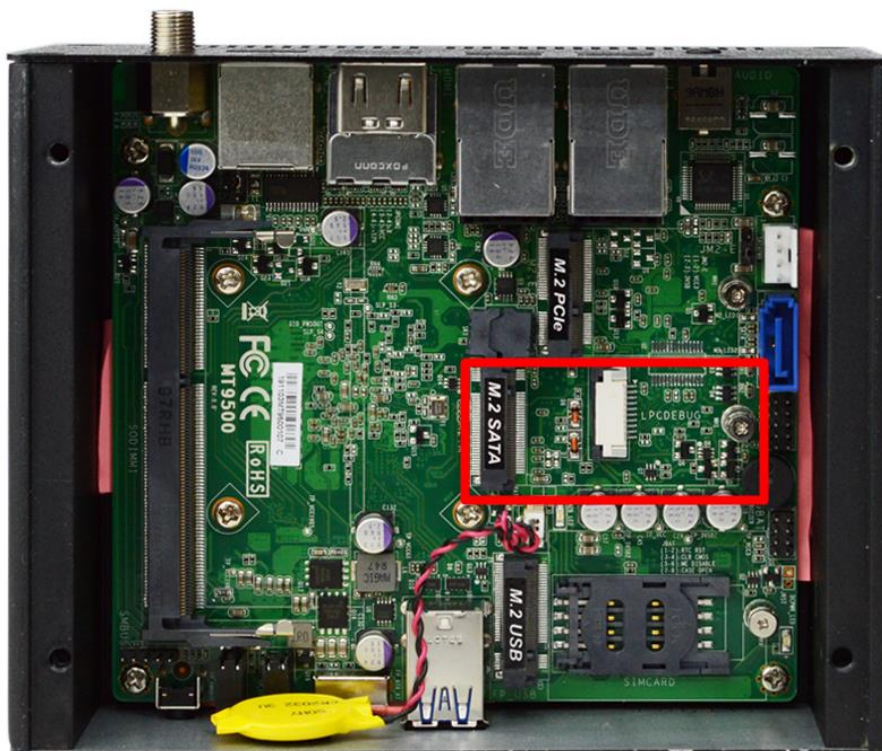


2. Insert the gold-figure side of the compatible SO-DIMM into the slot at a 30 degree.



3. Press down to secure the SO-DIMM to the slot. The eject tabs will lock automatically if installing direction is correct.

III. To Install M.2 SATA Card(2242)



1. Locate the M.2 SATA (2242) slot on the board. Prepare compatible M.2 SATA (2242) card.



2. To install compatible card, please remove the screw in the marked spot at first.



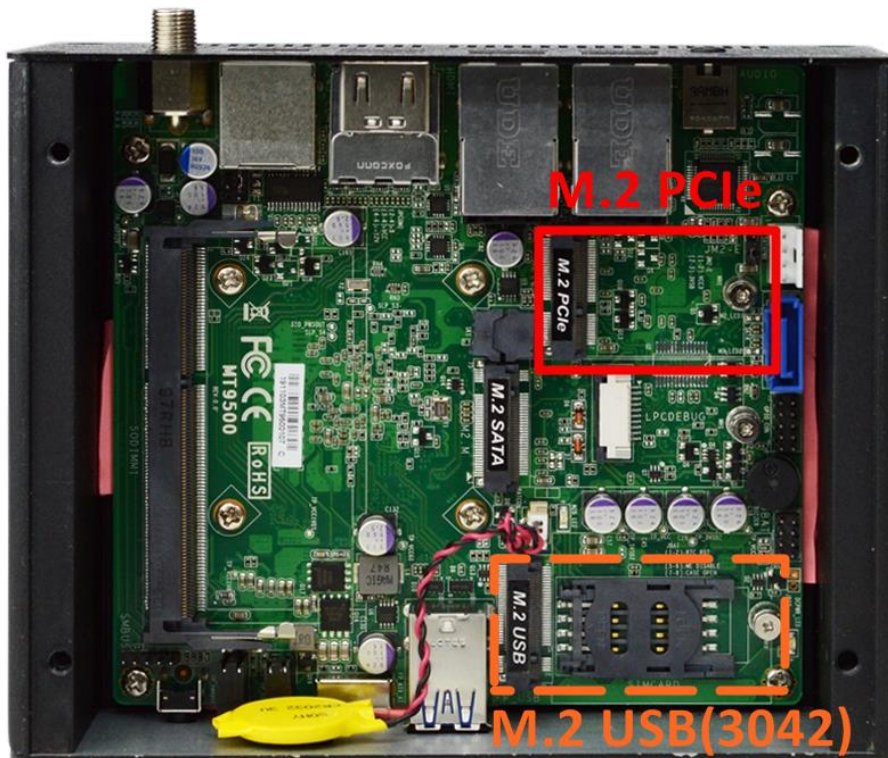
3. Insert compatible 2242 card into the slot.



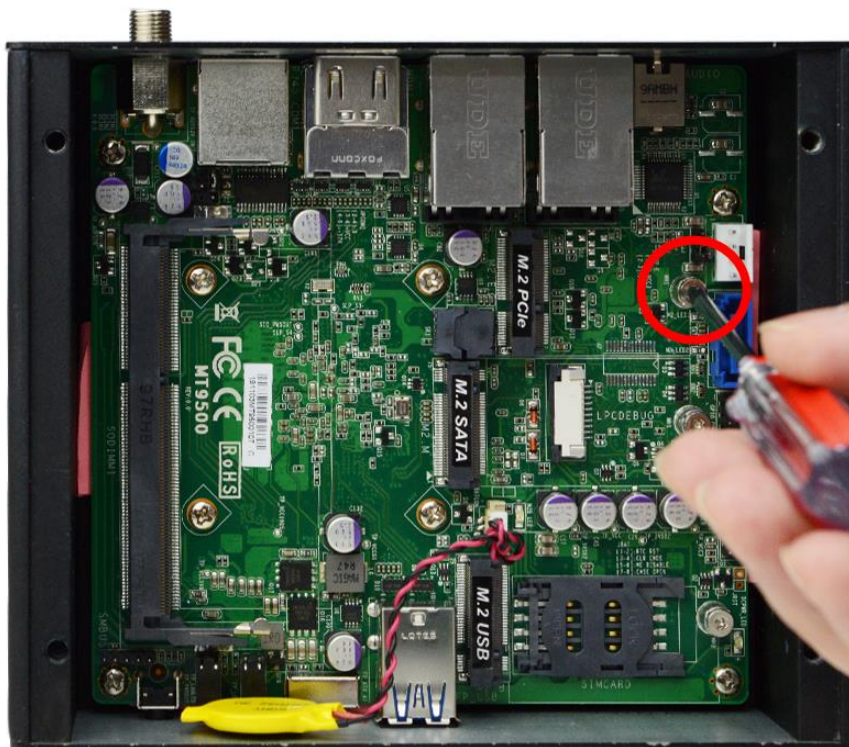
4. Tighten up the screw removed before to the marked spot to secure the card.

IV. To Install Wi-Fi Card and M.2 USB(3042) Card

***Note:** M.2 PCIe (E key) is for Wi-Fi card; M.2 USB (3042, B key) is for 3G/4G card. Below is a demonstration of Wi-Fi card installation. Please use the same way to install M.2 USB(3042) card.



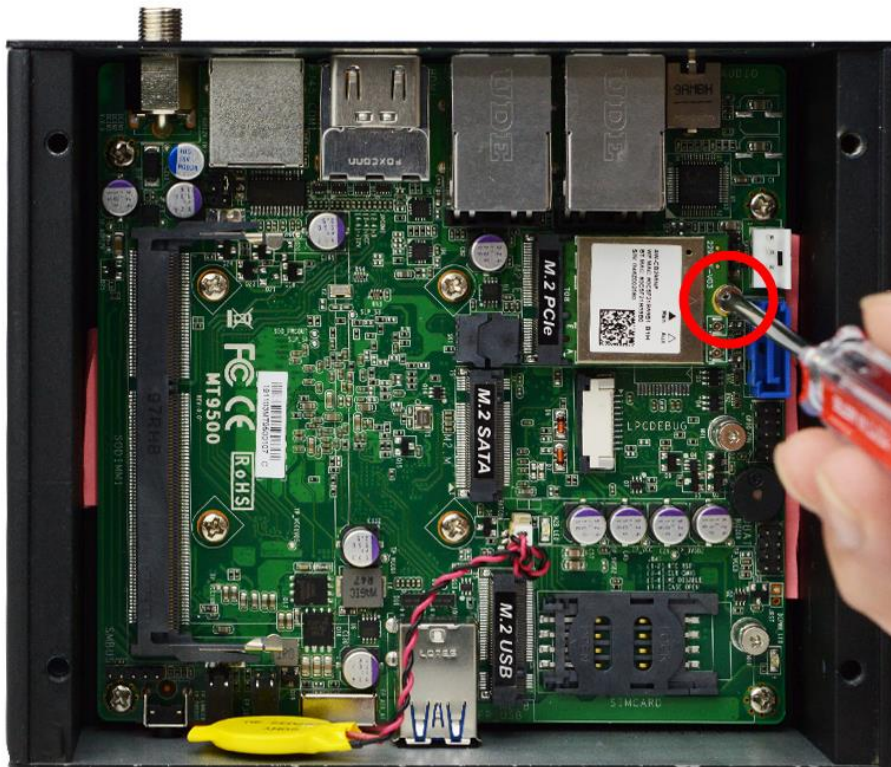
1. Locate M.2 PCIe slot on the board.



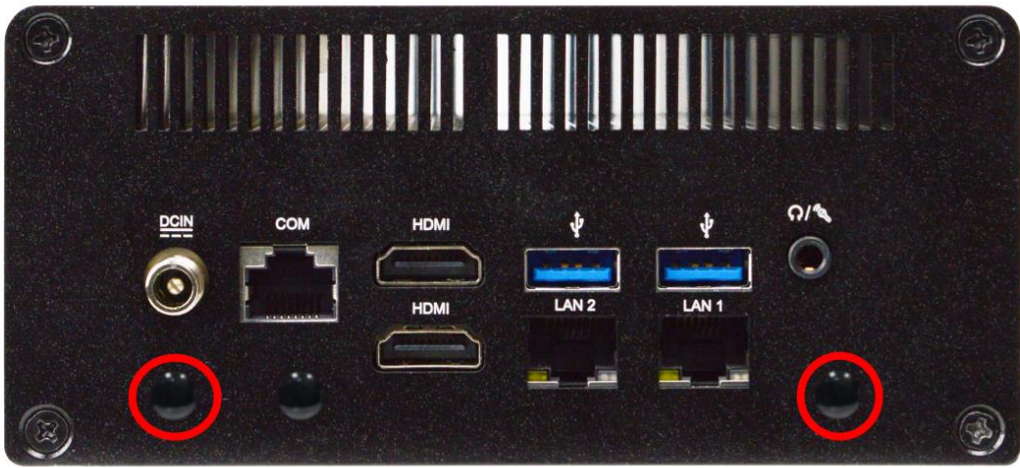
2. Remove the marked screw and use it to lock compatible card to the slot in later installation.



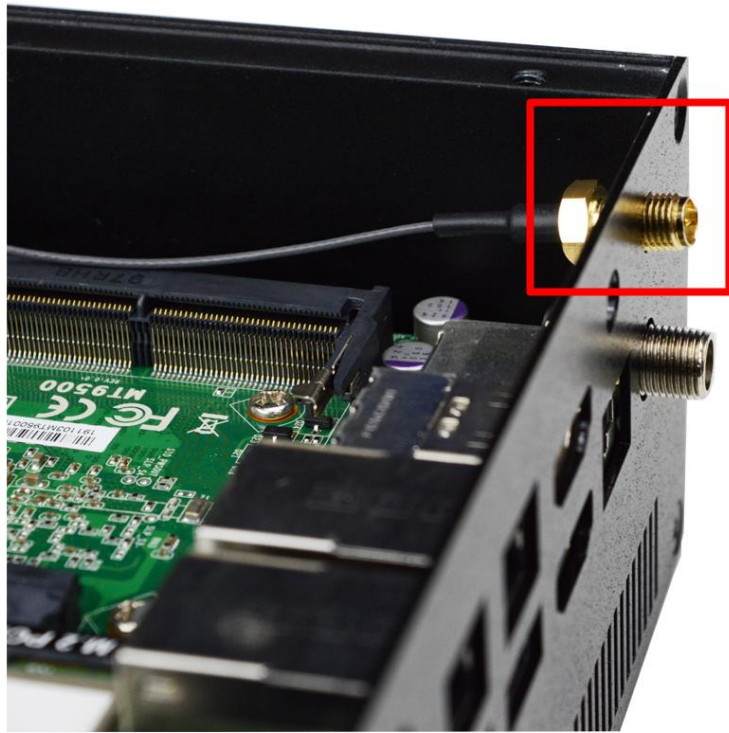
3. Insert the gold-figure side of the compatible card into the slot and press down.



4. Secure the card to the board by tightening up the screw to the marked spot.



5. Locate the reserved antenna holes on the back panel. Remove the dust-proof plugs on the marked spots from the panel to install the antenna, as the following details show.



6. Push this antenna head into antenna hole of the rear panel from the backside of the panel.

6-1

6-2

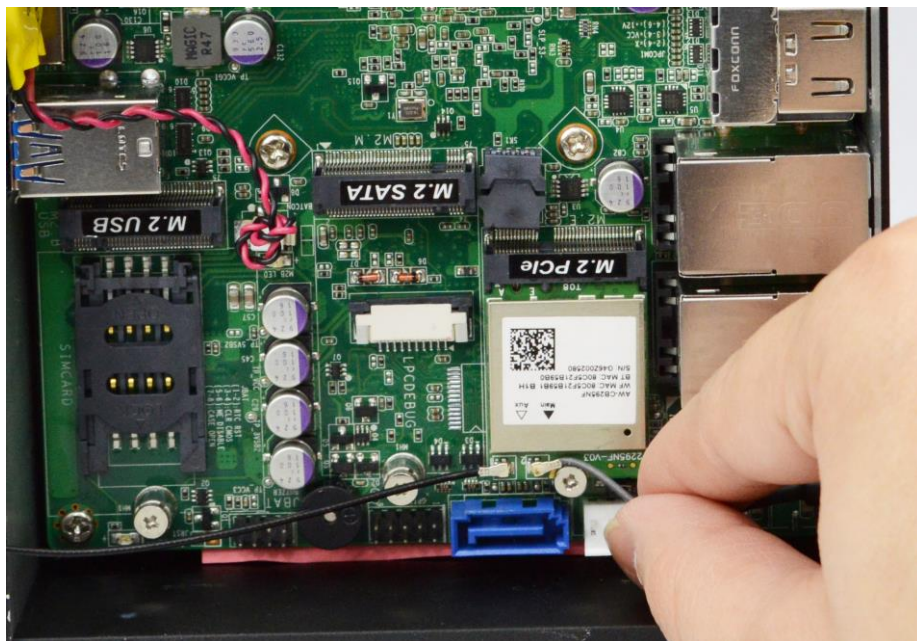


The washer① & the hexagonal screwnut②.

Push the washer① through the antenna head.



7. And then lock the antenna head to the front side of the rear panel with the hexagonal screwnut ② and tighten it up.



8. Press the metal hat on the end of the antenna string to corresponding antenna slot on the card as shown.



9. The rear panel with antenna screwheads installed.



10. Connect the external Wi-Fi receiver antenna to the antenna screw head on the rear panel.

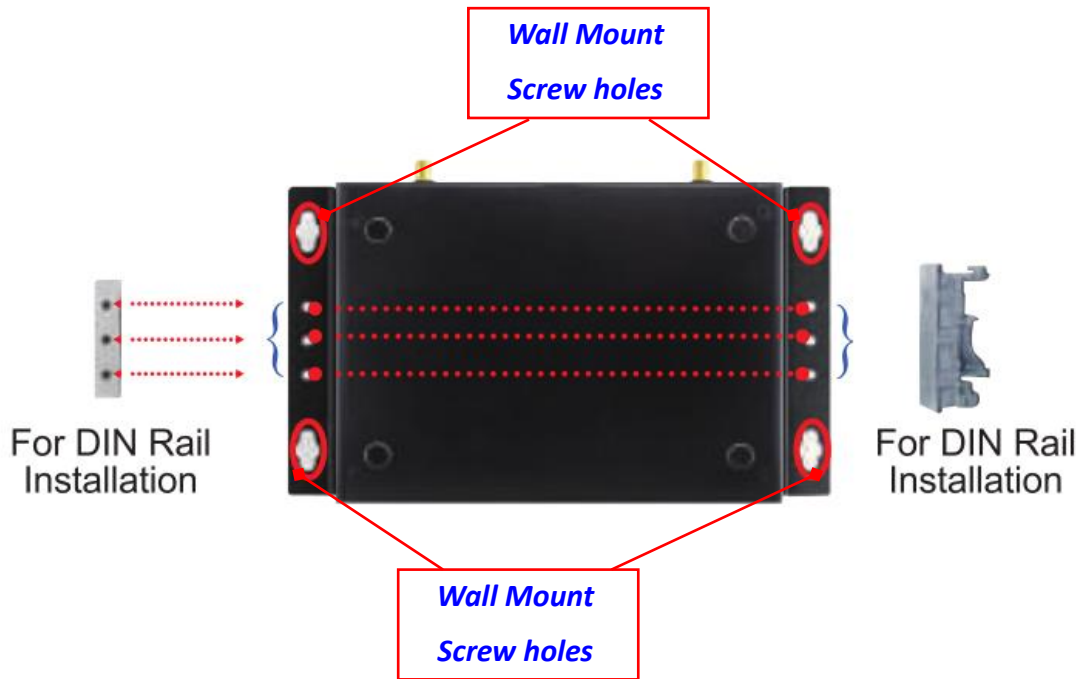
V. System Wall Mount Steps



1. Install wall mount rack to the system by tightening two screws in the marked positions.



2. Then lock the other two screws on the other side in the same way.



3. Wall mount the system by tightening 4 screws in the marked positions on both sides of the wall racks. See to it that the three smaller screw holes on one installed rack should be parallel to those on the other rack; otherwise please readjust the racks for correct installation.

* **Note:** The 3 smaller holes on both sides of the rack are reserved for DIN rail installation.