

# Quick Installation Manual

---



**NO: G03-FDF10QIG-F**  
**Rev: 3.0**  
**Release date: 2023-03-27**

**Notice:**

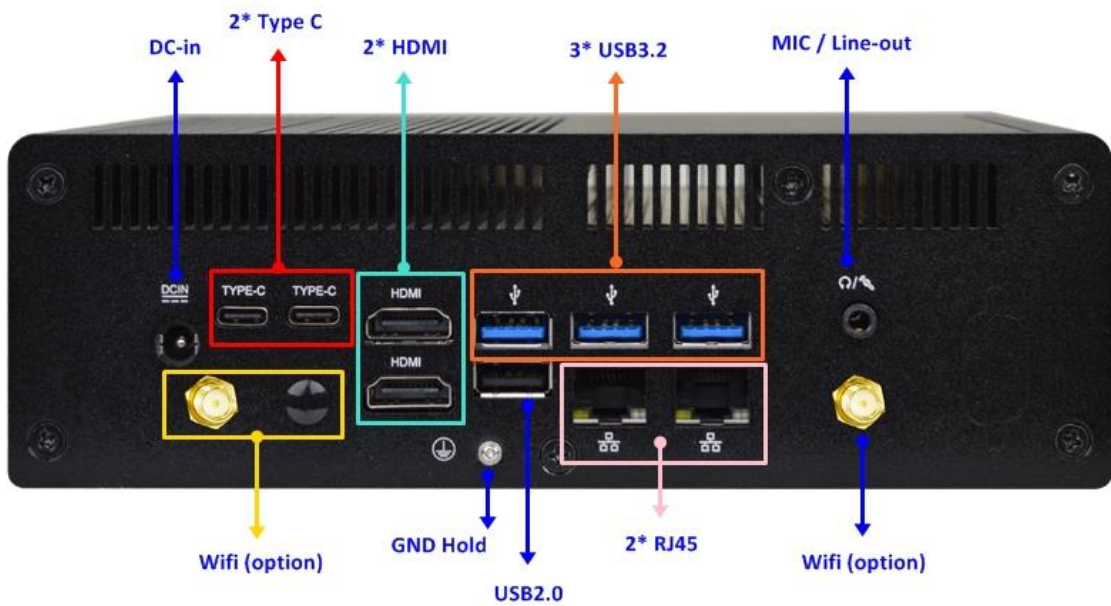
The photos in this file are for illustration purpose only. The model may not be the latest version. Please refer to the product you purchased for actual specification.

# I/O Outlets

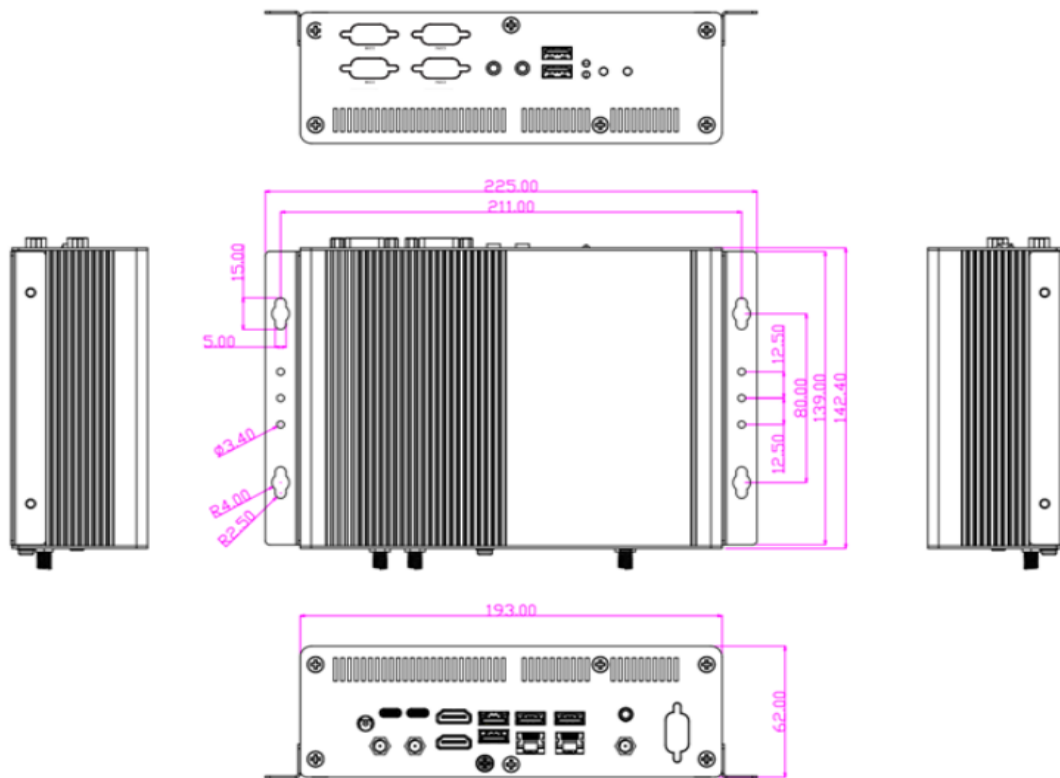
## Front



## Rear



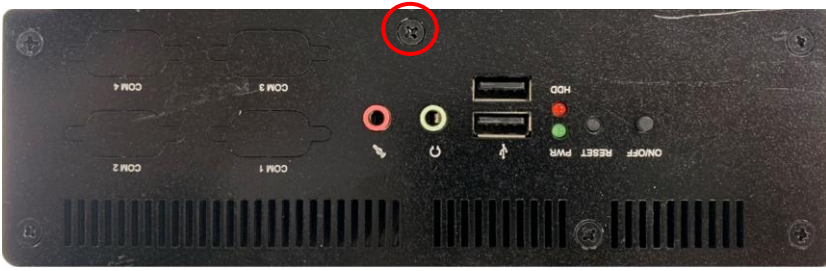
## Dimension and Outlines



### I. To Disassemble the Chassis



1. Locate the screws at the spots marked on this side of the system and unscrew them one by one.



2. Remove the marked screw on the front IO panel.



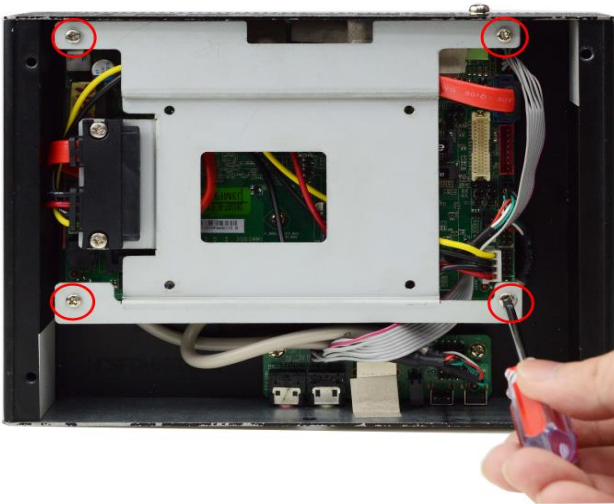
3. Remove the marked screw on the rear IO panel.



4. Lift the cover up to open the chassis.



5. The overview of the internal structure of the system with HDD tray pre-installed.

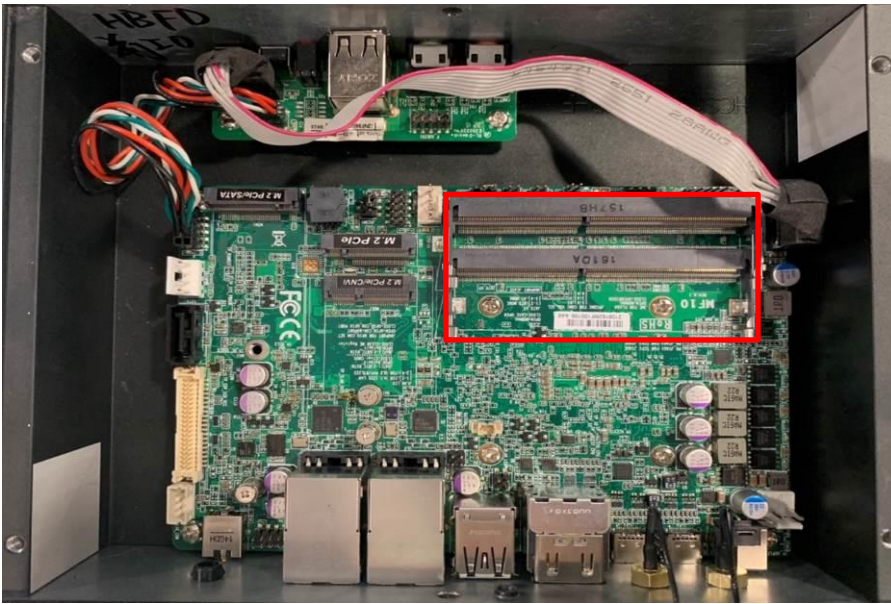


6. Remove the marked screws to disassemble the HDD tray from the system.

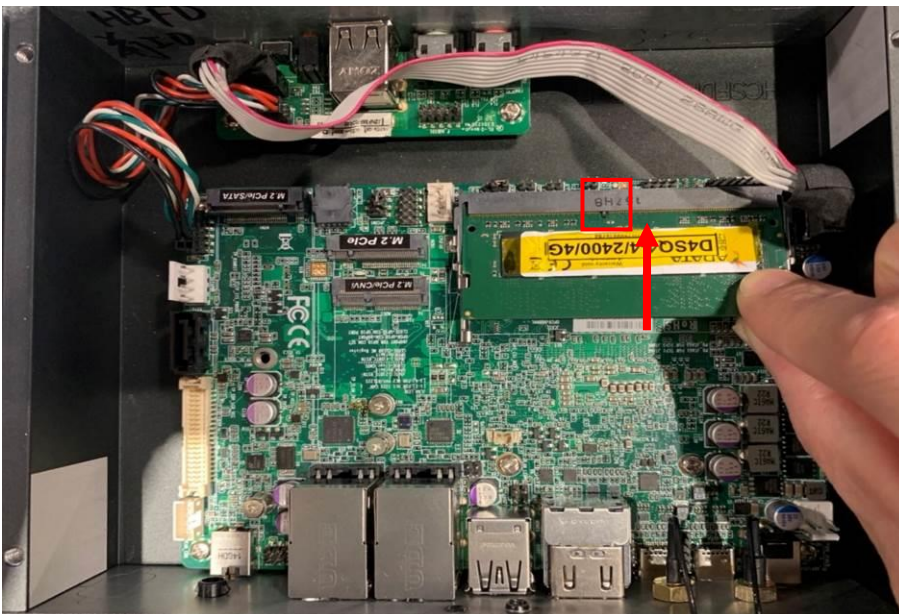


7. The overview of the internal structure of the system.

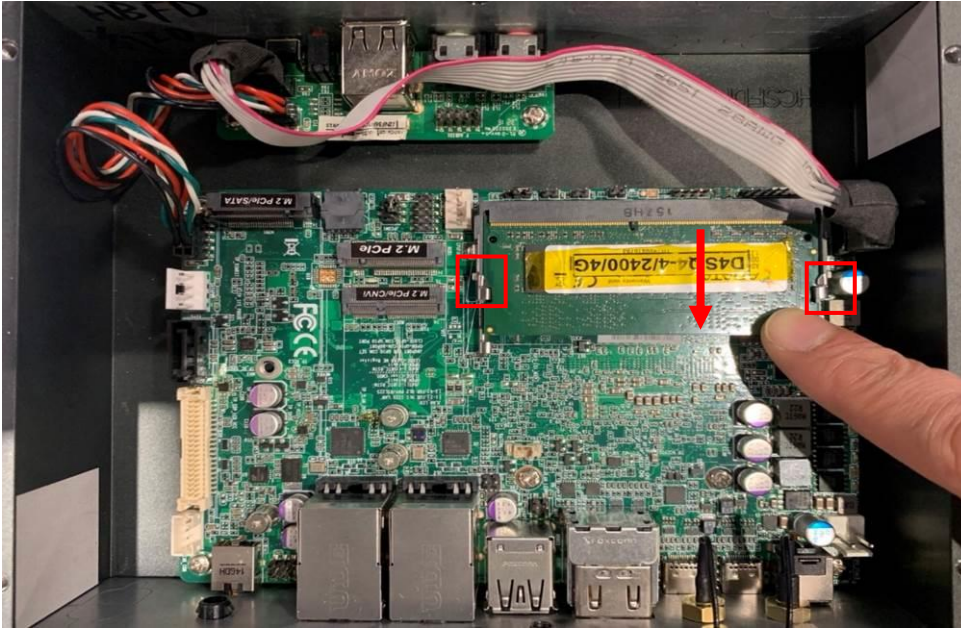
## **II. To Install SO-DIMM to the board**



1. Locate the SO-DIMM slots on the board.

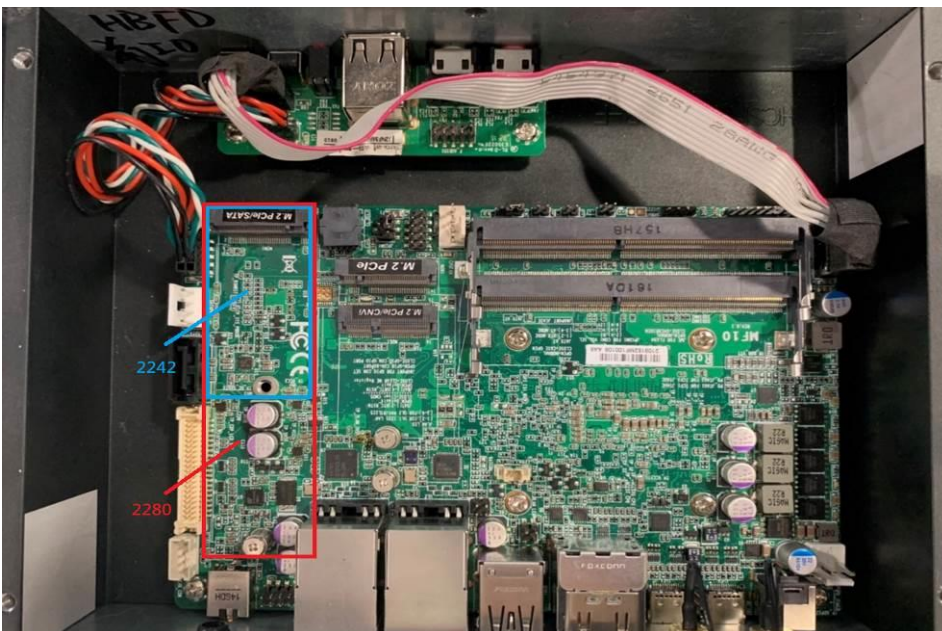


2. Insert the gold-figure side of the compatible SO-DIMM into the slot at a 30 degree angle. See to it that the break of the module fit into the notch of the slot and the golden-finger side should be fully plugged into the slot.

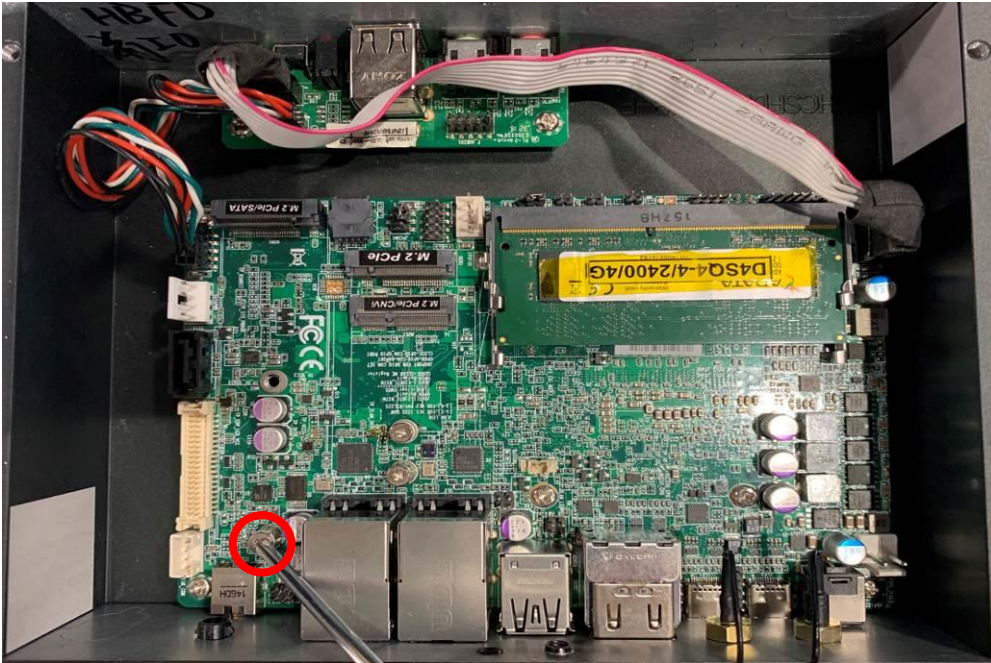


3. Press down to secure the SO-DIMM to the slot. The eject tabs will lock automatically if installing direction is correct.

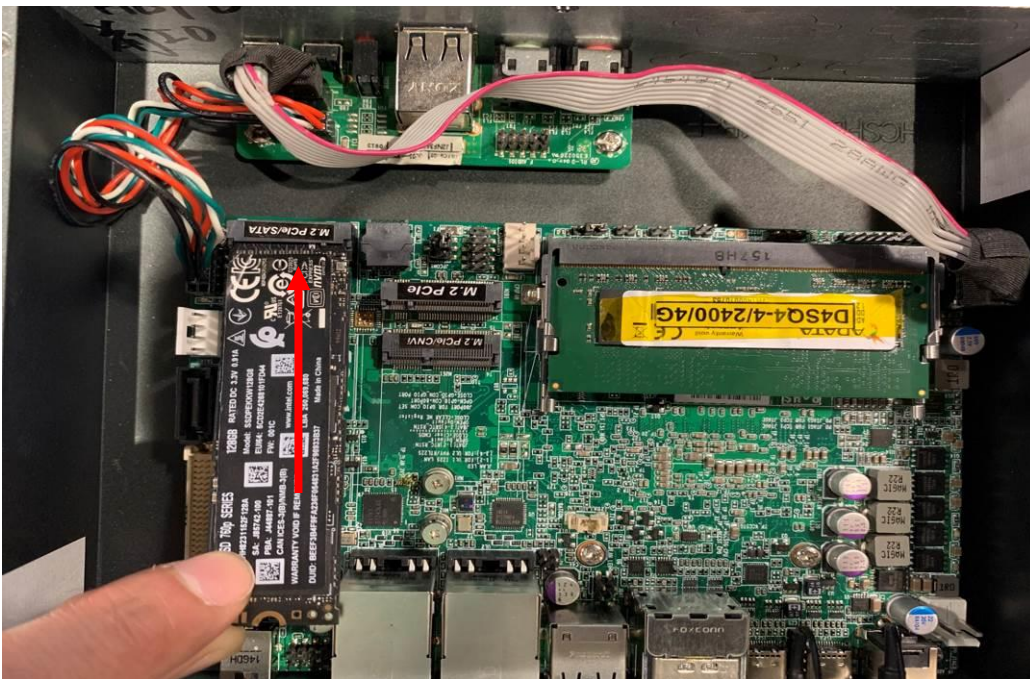
### **III. To Install M.2 M-Key SATA (2242/2280) card**



1. Locate the M.2 SATA slot on the board. System supports two types of M.2 M-Key card in different lengths (2280/2242). Prepare compatible M.2 SATA card.

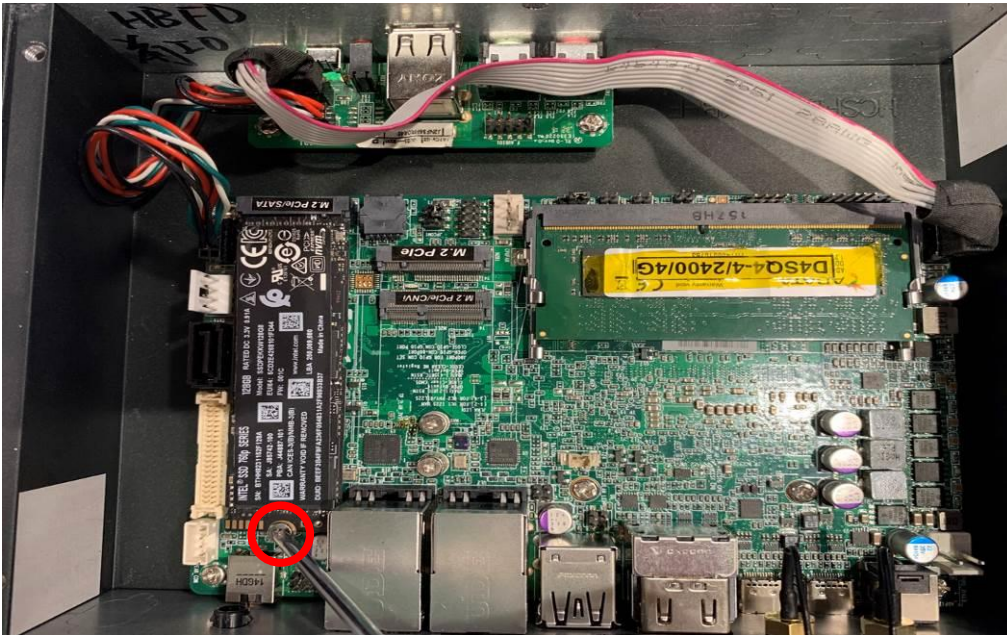


2. To install compatible card, please remove the screw in the marked spot at first.



3. Insert compatible M.2 M-Key, type-2280 card into the slot. See to it that the golden-finger side should be fully plugged into the slot.

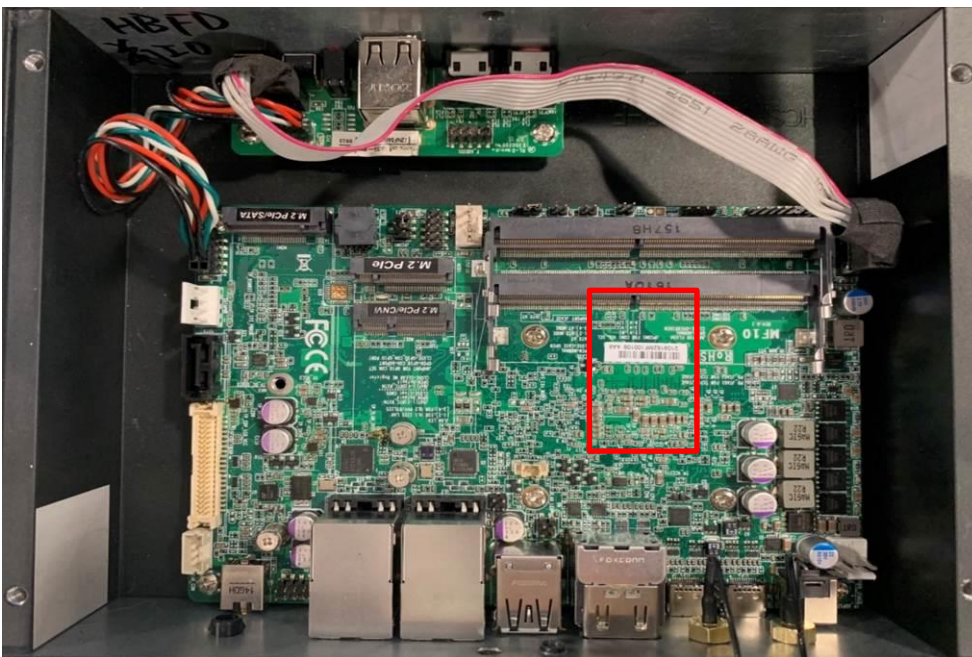




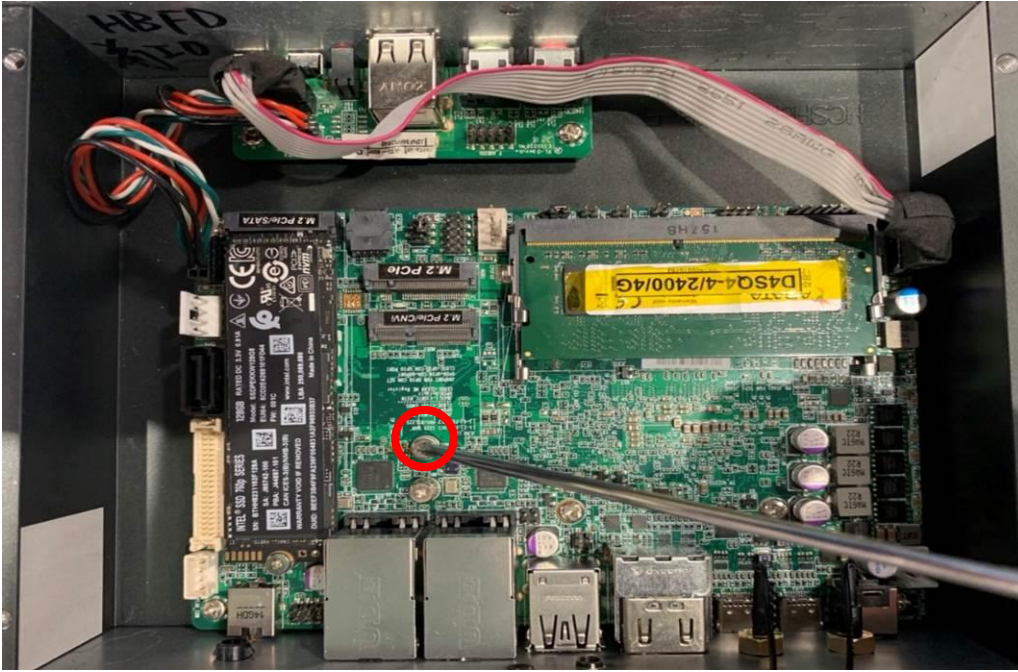
4. Tighten up the screw removed before to the marked spot to secure the card.

**\*Note:** The screw post and nut fixed at location MH4 by default for 8cm type-2280 card installation. If you wish to install type-2242 card, please remove corresponding screw post under the screw as well and lock the screw post into location MH3 before installing 4.2 cm card to the slot. The other steps are the same.

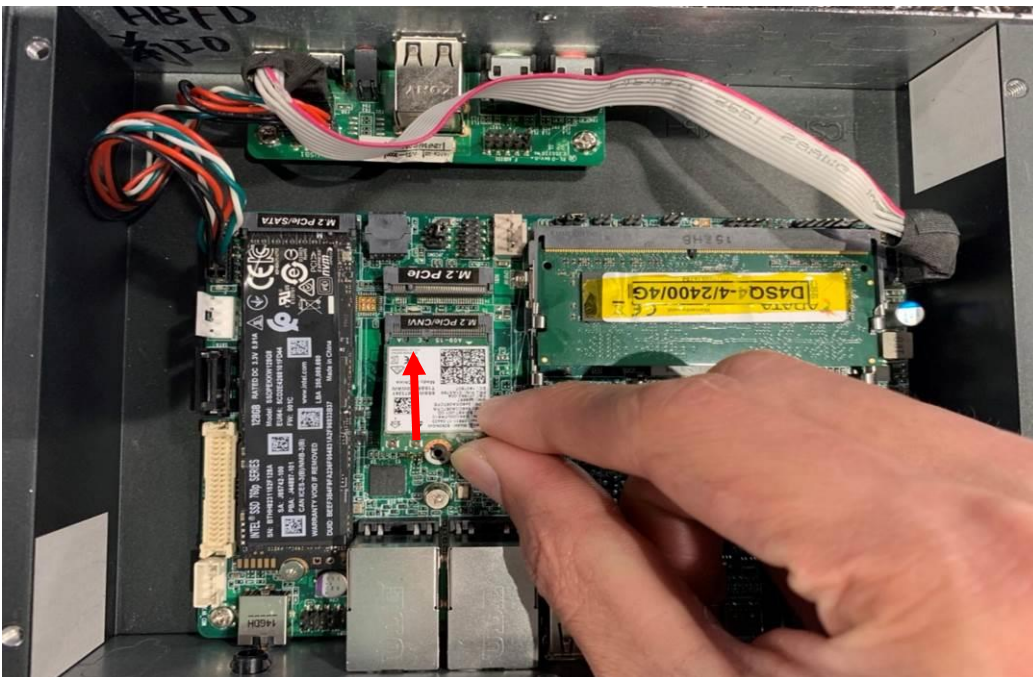
#### **IV. To Install M.2 E-Key (2230) USB 2.0/PCIe Card**



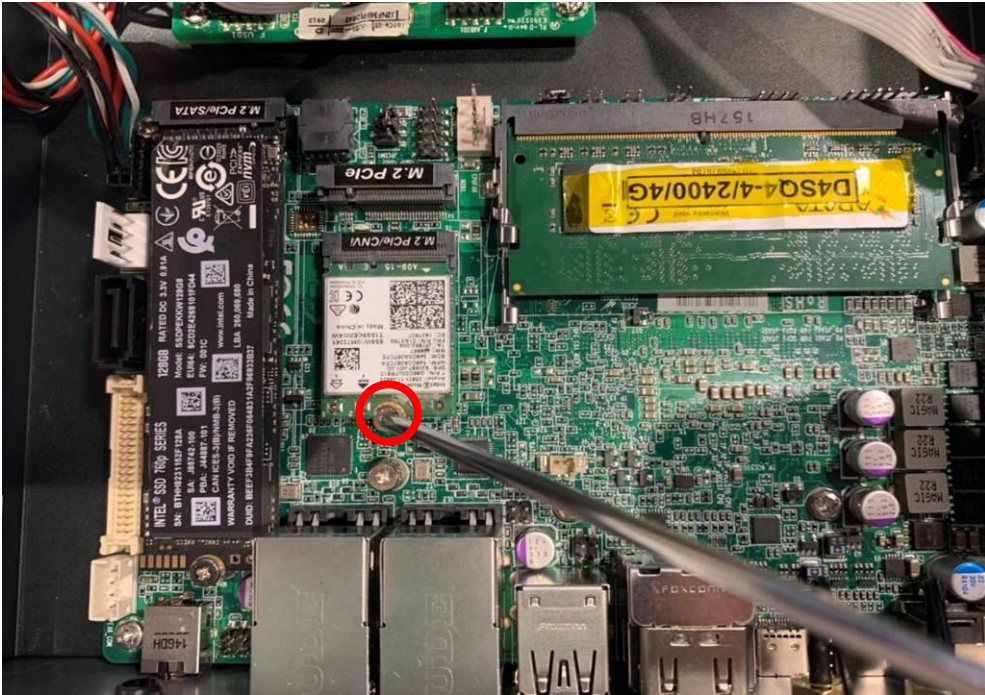
1. Locate the M.2 E-Key PCIe (2230) slot on the board. Prepare compatible M.2 PCIe, type - 2230 card.



2. Remove the marked screw and use it to lock compatible card to the slot in later installation.



3. Insert the gold-figure side of the compatible card into the slot and press down. See to it that the golden-finger side should be fully plugged into the slot.



4. Secure the card to the board by tightening up the screw to the marked spot.



5. Locate the reserved antenna holes on the rear panel. Remove the dust-proof plugs on the marked spots from the panel to install the antenna.



6. Push this antenna screw head into antenna hole of the rear panel from the backside of the

panel.

6-1



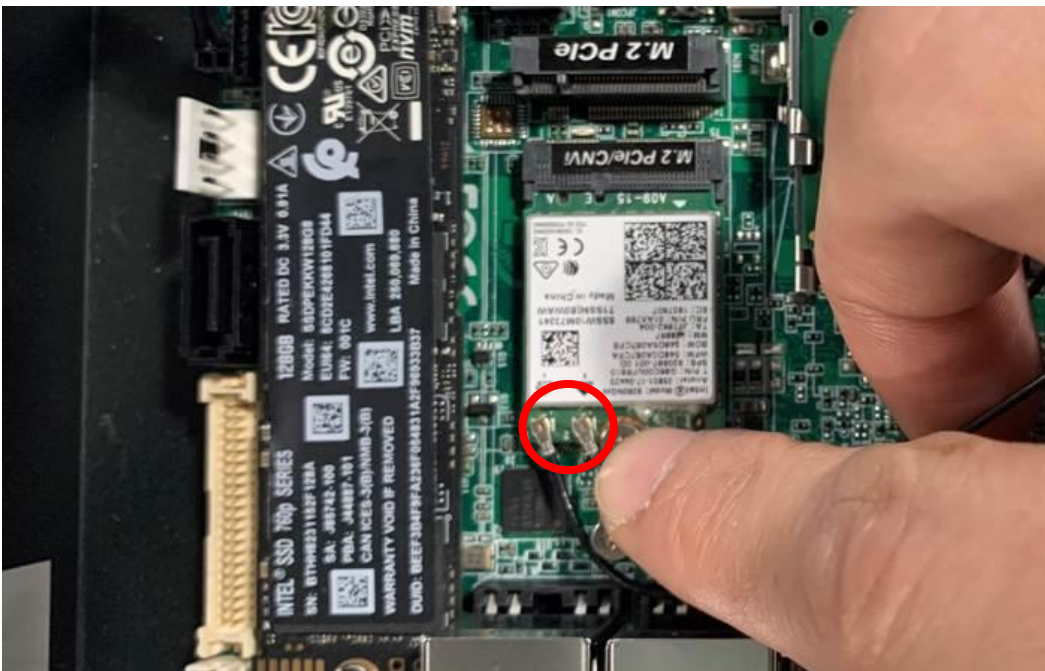
6-2



The washer ① & the hexagonal screw nut ②. Push the washer ① through the antenna head.



7. And then lock the antenna screw head to the front side of the rear panel with the hexagonal screw nut ② and tighten it up.

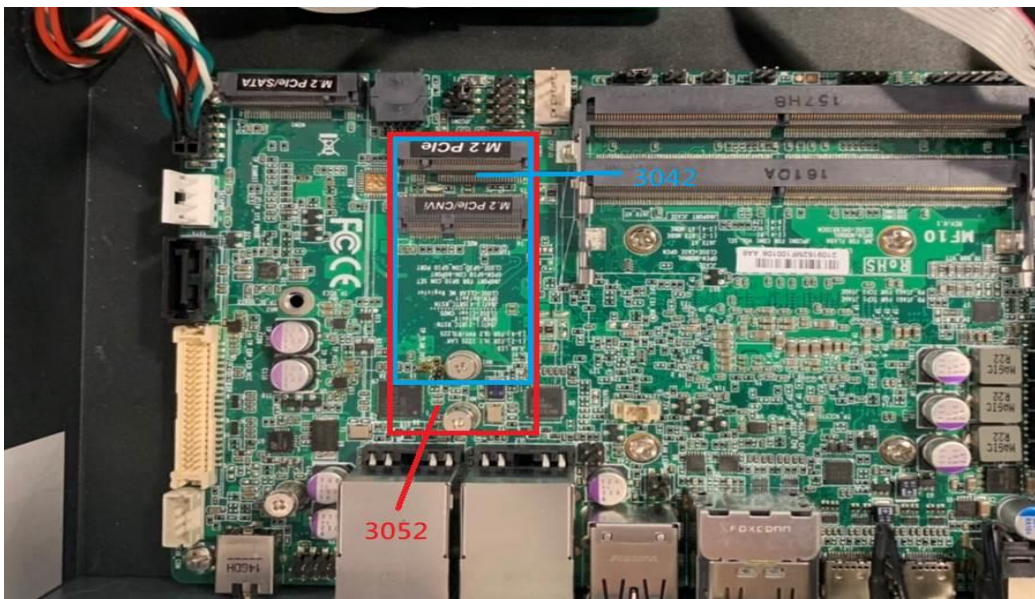


8. Press the metal hat on the end of the antenna string to corresponding antenna slot on the card as showed.

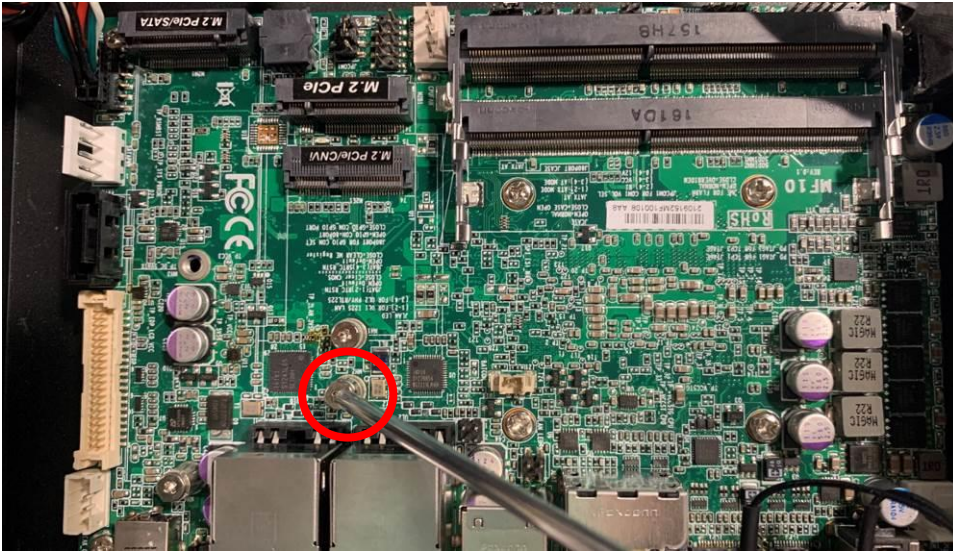


9. Repeat step 6 to 8, to finish installation of the other antenna.

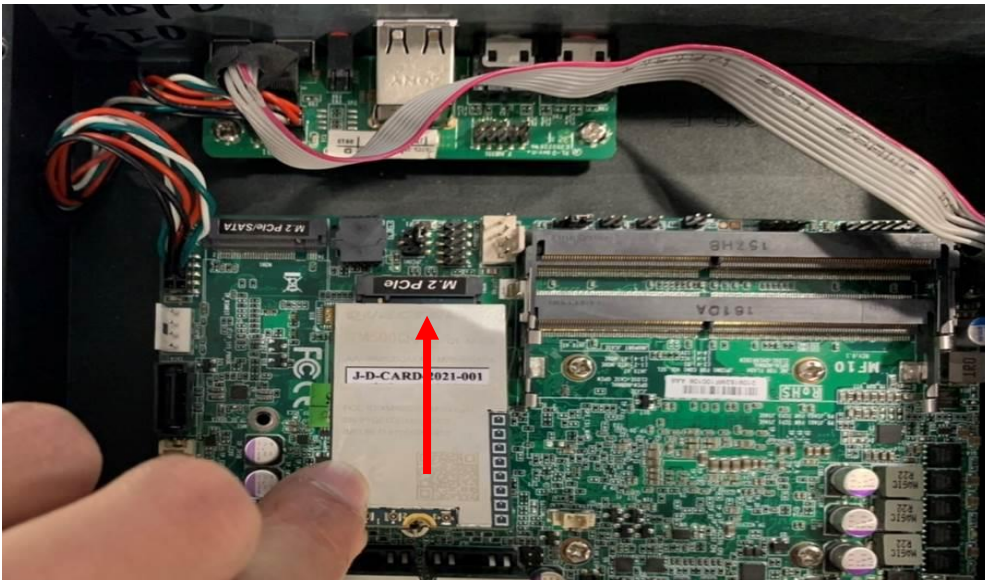
### **V. To Install M.2 B-Key (3042/3052) card**



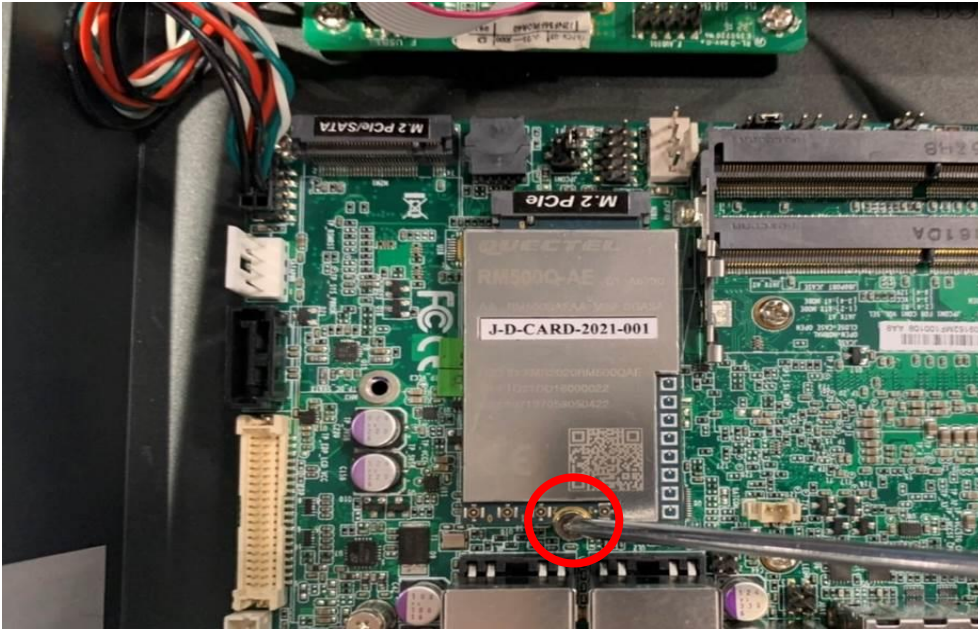
1. Locate the M.2 B-Key, type-3042/3052 slot on the board.



2. Remove the marked screw with a screwdriver.



3. Insert the gold-figure side of compatible M.2 B-Key, type-3052 card into the slot until the golden finger side fully emerged into the slot.



4. Install the screw back to the original spot.

**\*Note:** the screw post and nut fixed at location MH2 by default for 5.2cm M.2 B-key type-3052 card installation. If you wish to install M.2 B-key type-3042 card, please remove the M.2 E-key type-2230 card and screw on the location MH1 before installing 4.2cm card to the slot. The other steps are the same as M.2 B-key type-3052 card installation. (If you use M.2 B-key type-3042 card, M.2 E-key type-2230 is not available; vice versa).

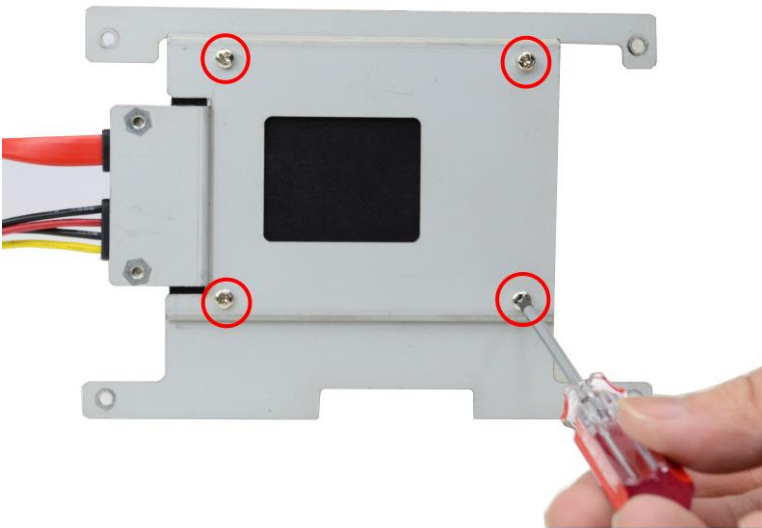
**Notice:** When all necessary installations are finished, please make sure that all cables unplugged before installations are connected to their original locations before restoring the back cover to the chassis and screws on the front panel/back panel/top cover locked to its original locations (**Refer to Part I**). See to it that the cables inside are not blocked or pressed.

## **VI. To Install Hard Disk**

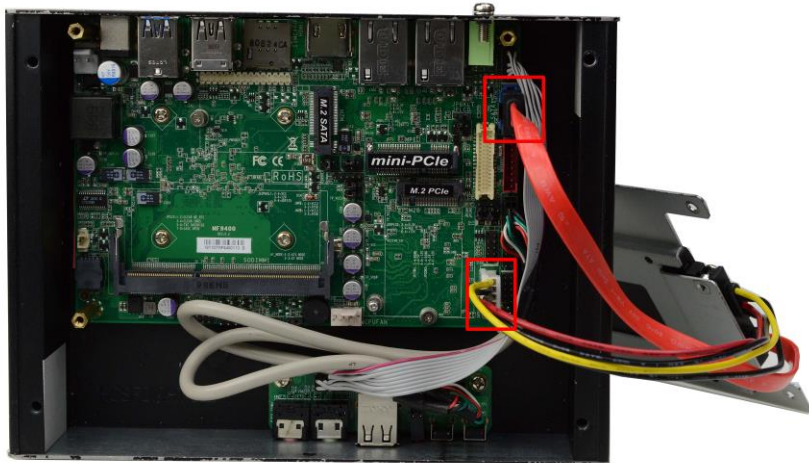


1. Place compatible SATA HDD upon HDD tray as showed above. Plug this side of the cable to SATA power-in connector and SATA connector of the hard disk.





2. Turn over the HDD tray and fix 2.5" HDD upon HDD tray by tightening 4\* screws marked in corresponding spots.



3. Plug SATA power connector and SATA port connector into connectors onboard.



4. Adjust the installed tray as showed above. Fix HDD tray into the system by tightening up 4 screws marked. (refer to I-6)

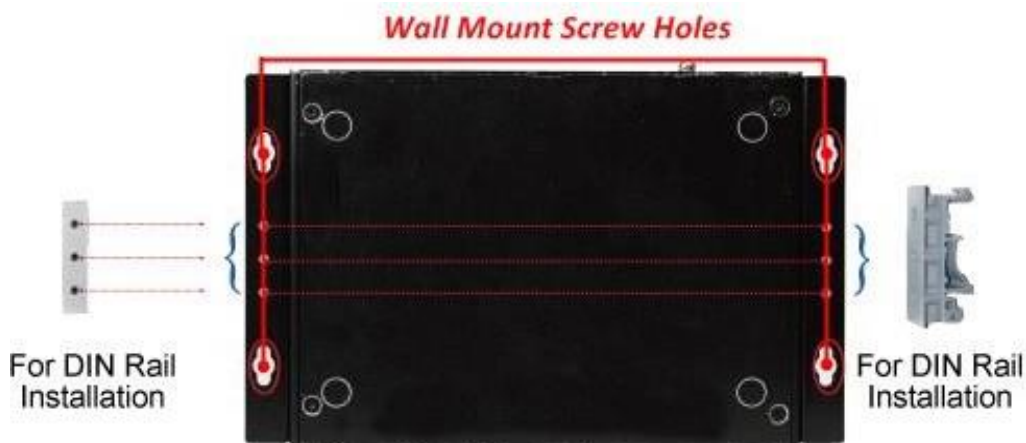
## VII. To Wall Mount the system



1. Install wall mount rack to the system by tightening two screws in the marked positions.



2. Then lock the other two screws on the other side in the same way.



3. Wall mount the system by tightening 4 screws in the marked positions on both sides of the wall racks.

**\*Note:** The 3 smaller holes on both sides of the rack are reserved for DIN rail installation. See to it that the three smaller screw holes on one installed rack should be parallel to those on the other rack; otherwise please readjust the racks for correct installation.

## Regulatory Compliance:

### Disclaimer

This QIG is intended to be used as a practical and informative guide only and is subject to change without prior notice. It does not represent commitment from Jetway Information Co., Ltd. Jetway shall not be liable for direct, indirect, special, incidental, or consequential damages arising out of the use of the product or documentation, nor for any infringements upon the rights of third parties, which may result from such use.

## Declaration of Conformity

### FCC Statement

This equipment has been tested and found to comply with the limits for a Class A digital device, pursuant to part 15 of the FCC Rules. These limits are designed to provide reasonable protection against harmful interference when the equipment is operated in a commercial environment.

This equipment generates, uses, and can radiate radio frequency energy and, if not installed and used in accordance with the instruction manual, may cause harmful interference to radio communications. Operation of this equipment in a residential area is likely to cause harmful interference in which case the user will be required to correct the interference at user's own expense.

*\*Note: 1. Any changes or modifications not expressly approved by the party responsible for compliance could void the user's authority to operate the equipment. 2. Shielded interface cables must be used in order to comply with the emission limits.*

### CE Notice

The product described in this QIG complies with all applicable European Union (CE) directives if it has a CE marking. For computer systems to remain CE compliant, only CE-compliant parts may be used. Maintaining CE compliance also requires proper cable and cabling techniques.

