

Quick Installation Guide



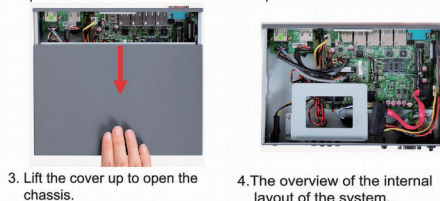
NO. G03-JC130QIG01-F
Rev: 1.0
Release date: 2016-7-1

Notice:

The product in this file serves to illustrate general installation steps only. In the case that your actual product is already installed with compatible expansion devices, please refer to the actual specification of the product you purchased and go direct to the part you needed.

I. To Open the Chassis

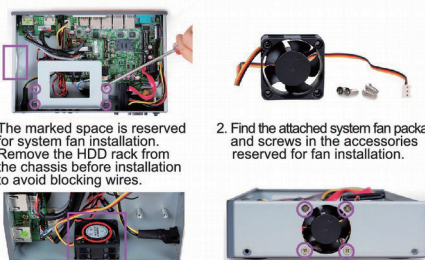
1. Remove the screws in the marked spots on this side of the chassis.
2. Remove the screws in the marked spots on the other side of the chassis.



3. Lift the cover up to open the chassis.
4. The overview of the internal layout of the system.

II. To Install SYSTEM Fan

1. The marked space is reserved for system fan installation. Remove the HDD rack from the chassis before installation to avoid blocking wires.
2. Find the attached system fan package and screws in the accessories reserved for fan installation.
3. Put system fan inside the chassis and adjust it to the reserved space for fan installation. See to it that the side with sticker should face towards the board.
4. Tighten up the screws in the marked spots to lock the fan to the system. The side without sticker should face outwards, as the above photo shows.

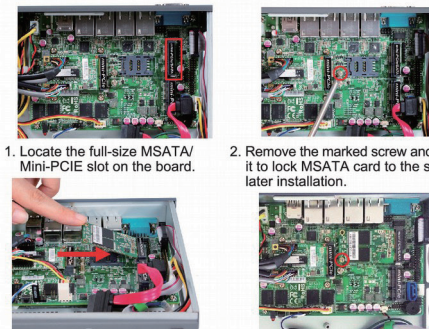


5. Connect system fan cable to fan header of the board, as shown above.

III. To Install MSATA Card

Note: MSATA card could only be installed in the above marked mini-PCIE/MSATA slot.

1. Locate the full-size MSATA/Mini-PCIE slot on the board.
2. Remove the marked screw and use it to lock MSATA card to the slot in later installation.
3. Insert the gold-figure side of the compatible MSATA card into the slot at a 30 degree angle and press down.
4. Lock the card to the board by tightening up the screw to the marked spot.



IV. To Install SIM Expansion Card

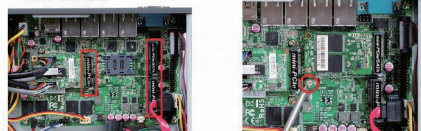
Note: SIM expansion card compatible to Mini-PCIE specifications could be installed to any of the three Mini-PCIE slots, if none of them is pre-installed with other compatible Mini-PCIE card.

1. Locate the Mini-PCIE slots on the board. Use can choose to install compatible SIM expansion card to one of them available.
2. Remove the marked screw and use it to lock SIM expansion card to the slot in later installation.
3. Insert the gold-figure side of the compatible SIM expansion card into the slot at a 30 degree angle and press down.
4. Lock the card to the board by tightening up the screw to the marked spot.

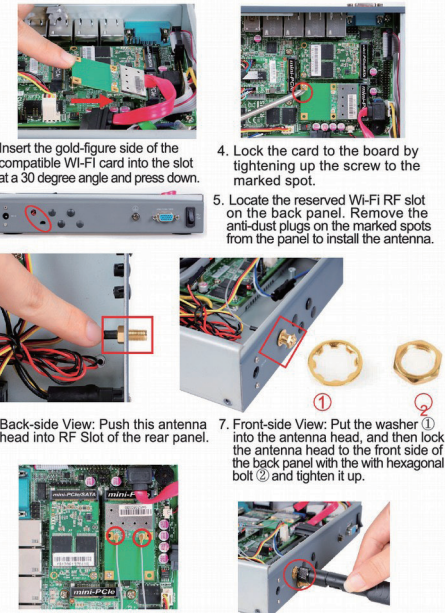
V. To Install WI-FI Card

Note: WiFi card compatible to Mini-PCIE specifications could be installed to any of the three Mini-PCIE slots, if none of them is pre-installed with other compatible Mini-PCIE card.

1. Locate the Mini-PCIE slots on the board. Use can choose to install compatible Wi-Fi card to one of them available.
2. Remove the marked screw and use it to lock WiFi card to the slot in later installation.



3. Insert the gold-figure side of the compatible Wi-Fi card into the slot at a 30 degree angle and press down.
4. Lock the card to the board by tightening up the screw to the marked spot.
5. Locate the reserved Wi-Fi RF slot on the back panel. Remove the anti-dust plugs on the marked spots from the panel to install the antenna.
6. Back-side View: Push this antenna head into RF Slot of the rear panel.
7. Front-side View: Put the washer ① into the antenna head, and then lock the antenna head to the front side of the back panel with the with hexagonal bolt ② and tighten it up.
8. Press the metal hats on the end of the antenna string to responding buttons on the card, as the above photo shows.
9. Connect the external Wi-Fi receiver antenna to the antenna head on the rear panel.



VI. To Install Hard Disk

1. Locate HDD tray for 2.5"HDD on the system.
2. Remove the screws in the marked positions with a screwdriver to remove the HDD tray from the system.
3. Push the HDD between the racks with the side up as the photo shows. Pay attention to the direction of connectors on the disk. Then Adjust the HDD till the screw holes on both sides of HDD matched with those in the HDD racks, as the photo shows.
4. Lock the 2.5"hard disk to one side of the tray by tightening the screws in the marked positions.
5. Lock the 2.5" hard disk to the other side of the tray by tightening the screws in the marked positions.
6. Lock the tray with hard disk installed to its original place of the system by tightening up the screws in the marked positions.
7. Plug the SATA power connector & SATA port connector to corresponding connectors on the board. Plug the other side of the cable to SATA power-in connector & SATA connector of corresponding connectors of the hard disk, as shown above.

