

Quick Installation Guide



NO. G03-JC310QIG01-F
Rev: 2.0
Release date: 2016-12-22

Notice:

The photos in this file are for illustration purpose only. The model may not be the latest version. Please refer to the product you purchased for actual specification.

I. To Open the Chassis



1. Locate the screws at the spots marked on this side of the system and unscrew them one by one.



2. Remove the screw in the marked spot on back panel.

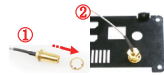


3. Lift the cover up to open the chassis. We use the model without pre-installed Wi-Fi card for installation guide.

II. To Install Wi-Fi Card



1. Locate the Wi-Fi antenna holes in the rear panel. This QIG shows how to install the antenna to the lower-left antenna. The other antenna has basically the same installation steps.



2. **Back-side View:** Put the above metal pat into the antenna head, and then push this antenna head into the back side of the rear panel.



3. **Front-side View:** Put the metal ring into the antenna head, and then lock the antenna head to the front side of the rear panel with the above hexagonal bolt.



4. Locate the half-size Mini-PCIe card slot on the board.



5. Remove the marked screw and use it to lock WiFi card to the slot in later installation.



6. Insert the gold-figure side of the compatible Wi-Fi card into the slot at a 30 degree angle and press down.



7. Lock the card to the board by tightening up the screw to the marked spot.



8. Remove the above four screws that lock the board to the chassis.



9. Lift the board up slightly for the string of the antenna to go through under the board.



10. Adjust the antenna string to the reserved semi-hole for the string.



11. Lock the board to the chassis by tightening screws to the above 4 spots marked.



12. Press the metal hat on the end of the antenna string to the antenna slot on the card as shown (if you install two antenna, refer to above steps to finish installation, and press the left metal hat of the left antenna to the left slot, the right metal hat to the right slot).



13. Connect the external Wi-Fi receiver antenna to the antenna connector on the rear panel.

III. To Install MSATA Card



1. Locate the full-size MSATA slot on the board.



2. Remove the marked screw and use it to lock MSATA card to the slot in later installation.



3. Insert the gold-figure side of the compatible MSATA card into the slot at a 30 degree angle and press down.

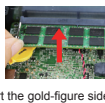


4. Lock the card to the board by tightening up the screw to the marked spot.

IV. To Install SO-DIMM to the board



1. Locate the SO-DIMM memory slot on the board.



2. Insert the gold-figure side of the compatible SO-DIMM into the slot at a 30 degree and then press down. The eject tab will lock it if installed correctly.

V. To VESA Mount the System



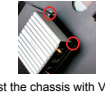
1. Locate the two screw holes reserved for VESA mount on the cover of the system. Take note of the directions of the system.



2. Place the VESA mount panel upon the cover. Tighten up compatible screws to lock the chassis to the panel as the photo shows.



3. Unlock the reserved screws for VESA mount on the back cover of the monitor.



4. Adjust the chassis with VESA mount panel to the back cover of the monitor and lock it to the monitor by tightening up the above marked screws.

VI. To Wall Mount the System



1. Locate the two screw holes reserved for wallmount on the cover of the system. Take note of the directions of the system.



5. Check to make sure the screws are matched and fixed stably. The signature on the base should face upwards.



2. Place the panel upon the cover. Tighten up compatible screws to lock the chassis to the panel as the photo shows.



3. Adjust the chassis with wall mount panel to the wall and lock it to the wall by tightening up the above marked screws. Check to make sure the screws are matched and fixed stably. The signature on the base should face upwards.