

Quick Installation Guide



NO. G03-JC511QIG02-F

Rev: 1.0

Release date: 2021-3-12

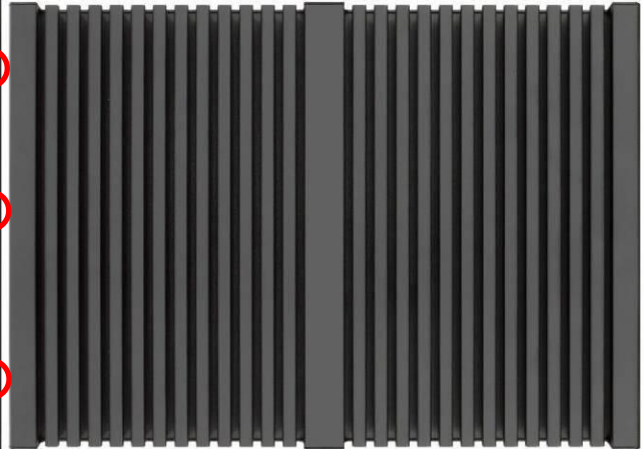
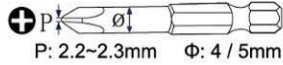
Notice:

The photos in this file are for illustration purpose only. The model may not be the latest version. Please refer to the product you purchased for actual specification.

I. To Open the Chassis

Note:

#2 Phillips Screwdriver is recommended.



1. Locate the screws in the spots marked on the top cover of the system and unscrew them one by one.
2. Turn over the barebone system with the heatsink upwards, as the photo shows.

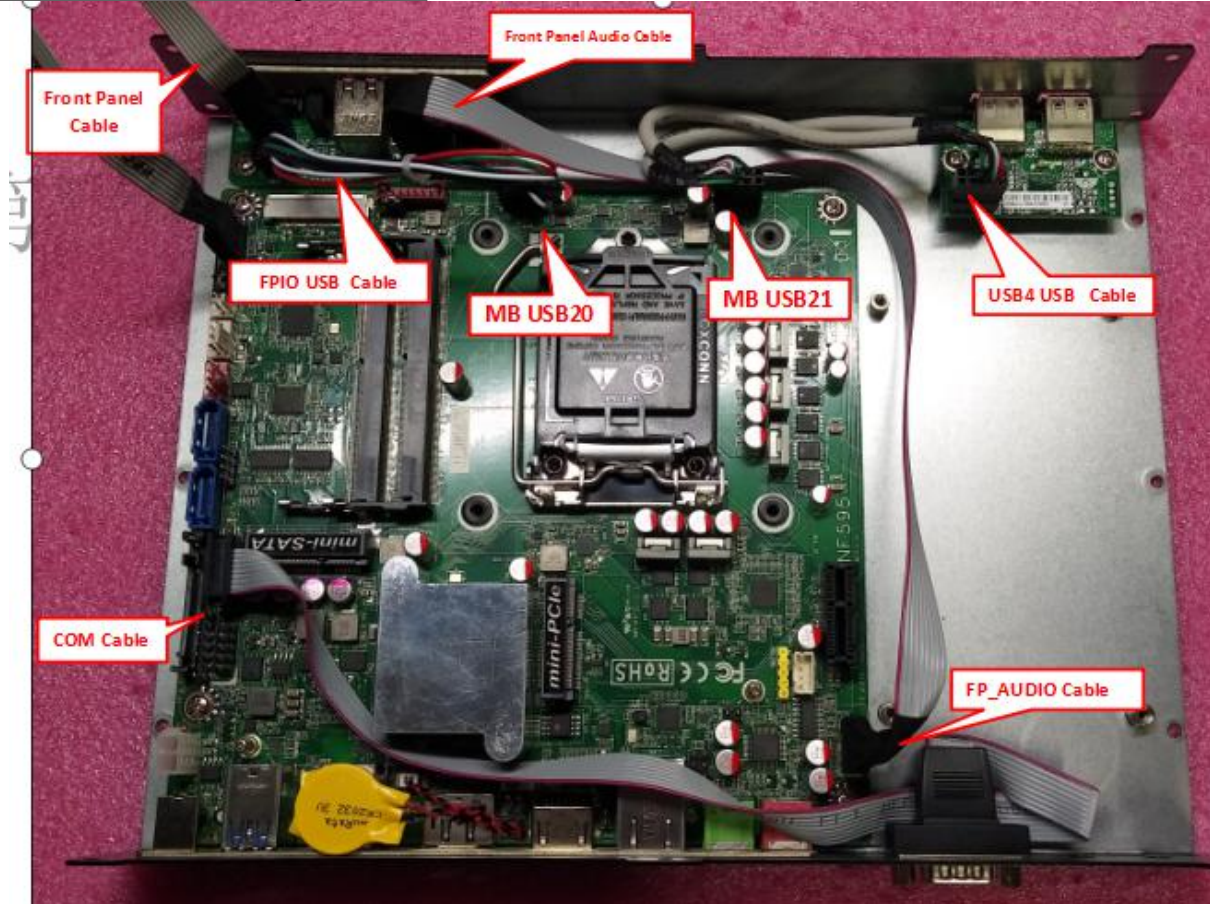


3. Remove the screws in the marked spots on the front panel.



4. Remove the screws in the marked spots on the rear panel.

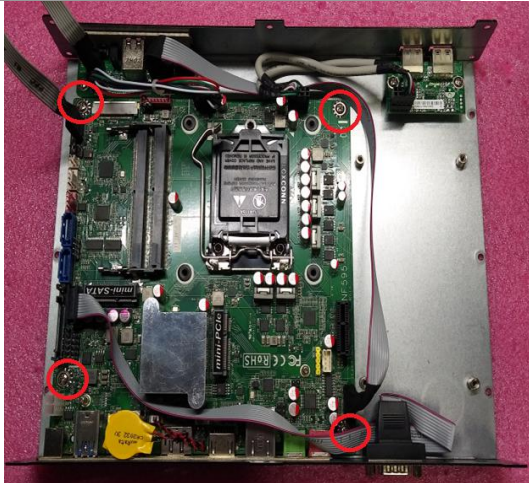
Cable Connection Reference:



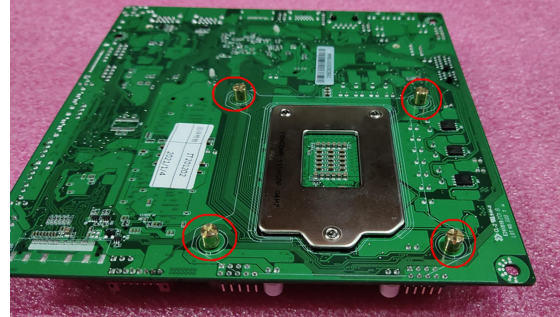
***Note:** The **red wire** on the cable should be connected to **Pin-1**.

5. For user to have a clear view of layout, we may unplug some of the cables during installation. Make sure that the cables are plugged into their original places when necessary installation finished for the system to function normally.

II. To Remove the Motherboard



1. Unplug the connecting wires on the motherboard, and 2. Turn over the motherboard on the platform and remove the marked screws on the back side to disassemble CPU heat sink from the board for CPU installation.

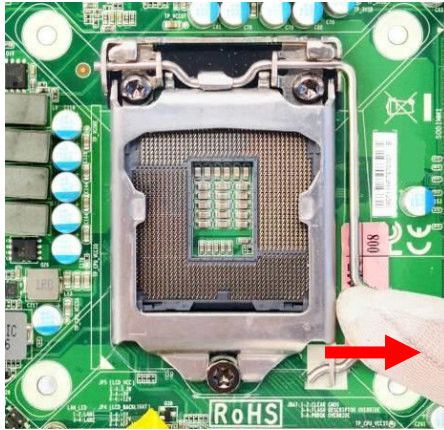


III. To Install CPU

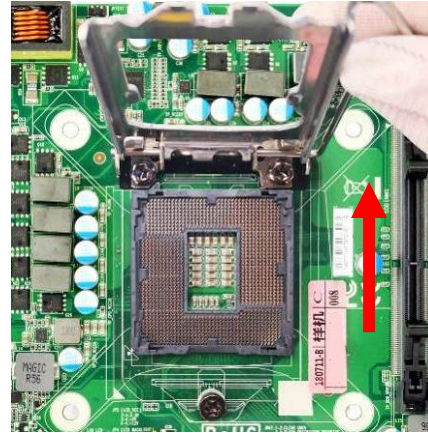


1. Find CPU socket on the board. Please make sure that CPU socket is facing towards you and the level is on your right hand side.
2. Remove the plastic protective cover from the socket (Put it to the original place if CPU is not installed. Do not touch the metal contact point of the CPU socket).

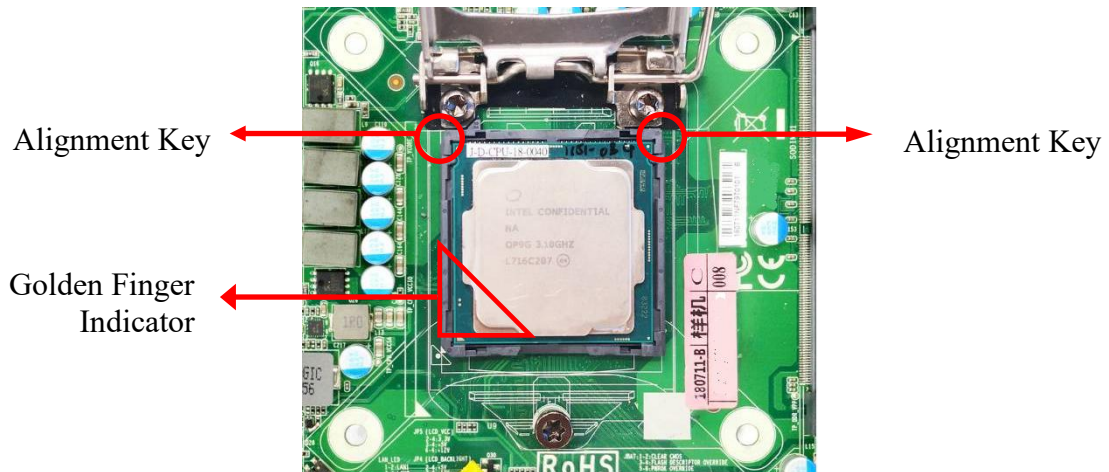




3. Press down the level and move it towards the right side to free it from the hook.



4. Open the level upwards about 135 degree and the metal protection plate will be pulled up at the same time.



5. Make sure that Pin-1 Golden Finger Indicator in the place as shown in the above photo and match the two alignment keys on the CPU with two points of the socket. CPU can only be correctly installed in this direction. Incorrect installation might cause damage to CPU.



- Put down the load plate in the direction shown above.

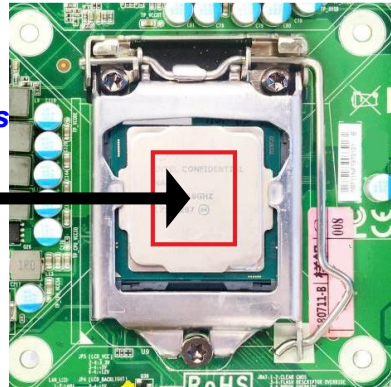


- Press down the load level and move it leftwards to make sure it is locked under the notch.

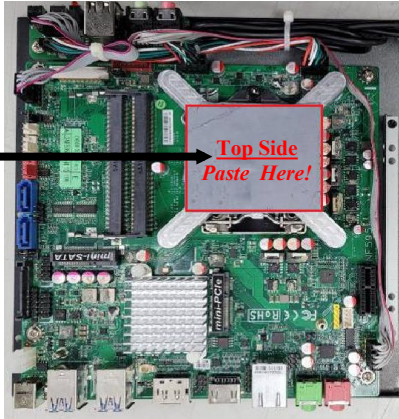
IV. To Install Heatsink & Thermal pads



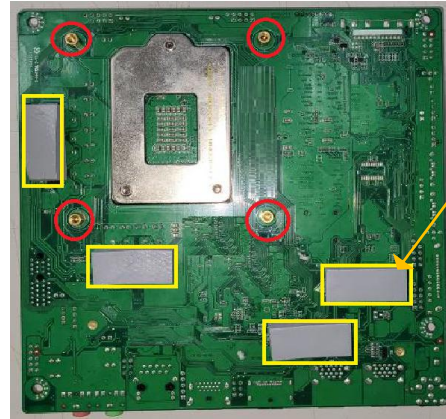
**P/N:
HCS501HS2-F *1 pcs
25*25*1mm**



- Find the above CPU cooler and CPU cooling pad packaging. Remove the protective film on both sides of the liner, and then apply it to the top of the CPU to achieve better heat conduction.



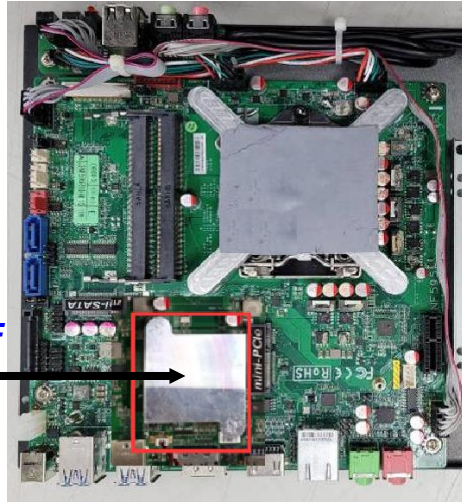
P/N:
HCS310HS1-F*1pcs
60*52*1.0mm



HCS501HS3-F*4
pcs
30*14*6.5mm

2. Place the CPU heatsink upon the installed CPU. The screw holes of the heatsink should match corresponding screw holes of the board. And then apply corresponding thermal pad to the top side of the heatsink as the photo shows.
3. Turn the board over and lock the heatsink to the board by tightening the screws (P/N: LCSC306M02-F*4) on the marked spots. Thermal pads need to be attached to the bottom of the motherboard, which will help the system to dissipate heat (P/N:HCS501HS3-1F*4).

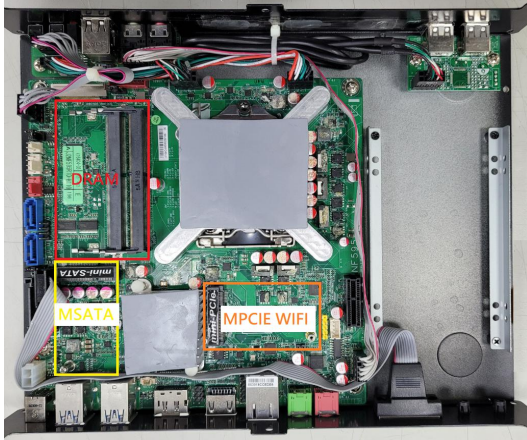
P/N: HCS501HS2-F
***1 pcs,**
25*25*1 mm



4. A thermal pad should be attached to the top of the aluminum block of the South Bridge chip.
(P/N: HCS501HS2-F*1)

Notice : Please restore the screws that lock the motherboard to the chassis cover when CPU & heatsink installation completed. The cables unplugged during this process should be plugged to their original places after heatsink installation.

V. To Install SO-DIMM to the board

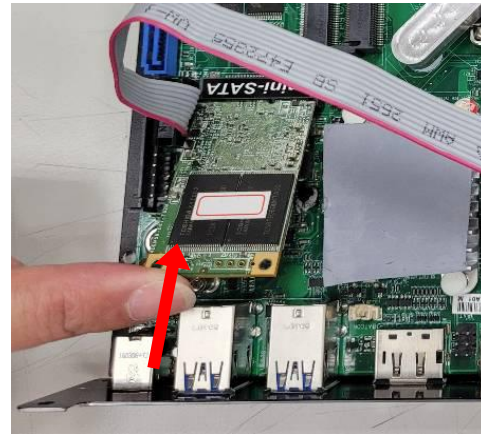
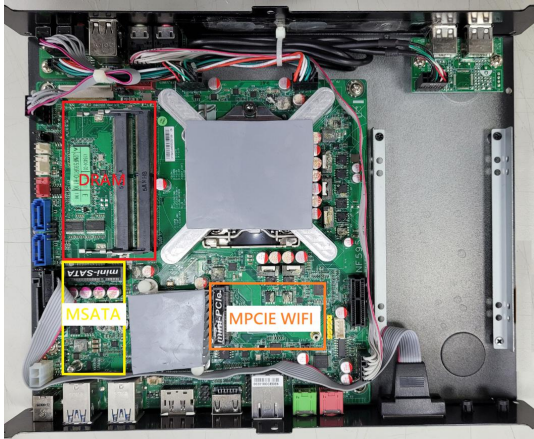


1. Find the SO-DIMM slot on the board for further installation.

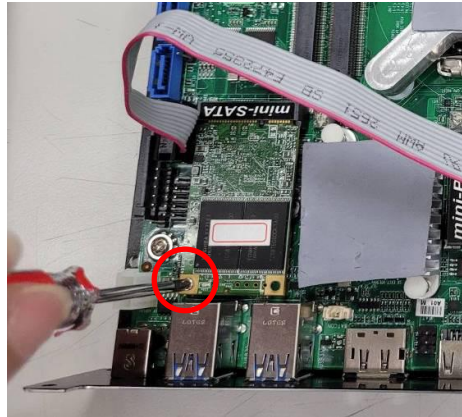


2. Insert the gold-figure side of the compatible SO-DIMM into the slot at a 30 degree and press down. The eject tabs will lock automatically if installed correctly.

VI. To Install MSATA Card

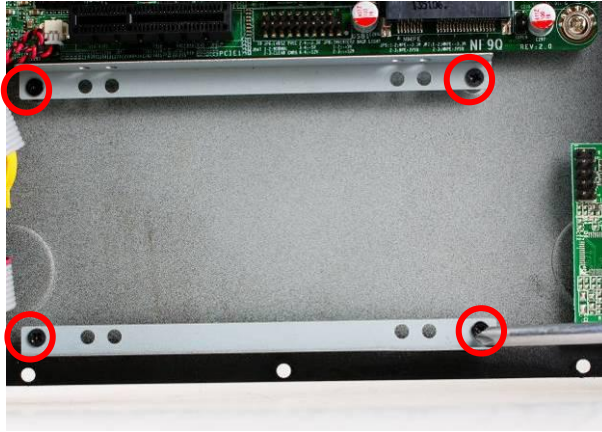


1. Locate the Mini SATA slot on the board. Remove the marked screw and use it to lock Mini SATA card to the slot in later installation.
2. Insert the gold-figure side of the compatible Mini SATA card into the slot.



3. Lock the card to the board by tightening up the screw to the marked spot.

VII. To Install Hard Disk

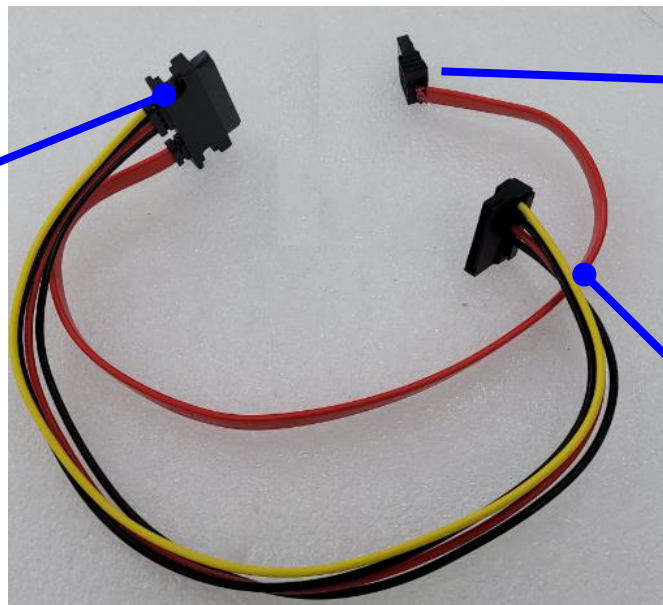


1. Remove the HDD racks from the cover by tightening up the screws in the marked places.
2. Adjust the HDD and the racks in the directions as the above photo shows.



3. Lock the SATA hard disk to one of the racks by tightening the screws in the marked position.
4. Lock the SATA hard disk to the other rack by tightening the screws in the marked position.

To connect SATA hard disk driver.



To connect onboard SATA port.

To connect onboard SATA power connector.

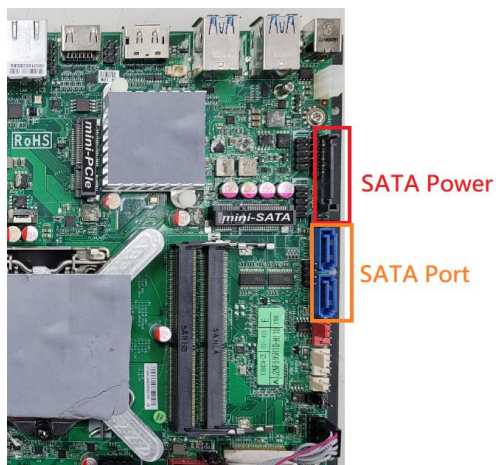
5. Find the compatible SATA cable for the system in the accessories package.



6. Plug this side of the cable to SATA power-in connector and SATA connector of the hard disk.



7. Lock the racks hard disk with SATA HDD installed to its original places by tightening the screws in the marked position.



8. Plug the other side cable to the SATA power connector and SATA port connector on the board.

Notice:

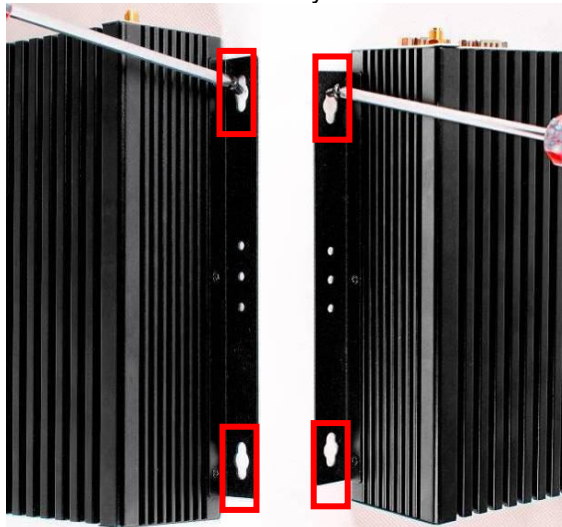
When all necessary installations are finished, please make sure that all cables unplugged before installations are connected to their original places before restoring the back cover to the chassis and screws on the front panel/back panel/top cover locked to its original places (Refer to Part I). See to it that the cables inside are not blocked or pressed.

VIII. To Wall Mount the System

P.S: 501 & 511 are assembled in the same way.



1. Install wall mount rack to the system by tightening the screws in the marked positions. Then lock the other three screws on the other side in the same way.



2. Wall mount the system by tightening two screws in the marked positions. Then tighten up the other two screws in the marked positions on the other rack.