

# Quick Installation Manual



**NO: G03-JC903I05QIG-F**

**Rev: 2.0**

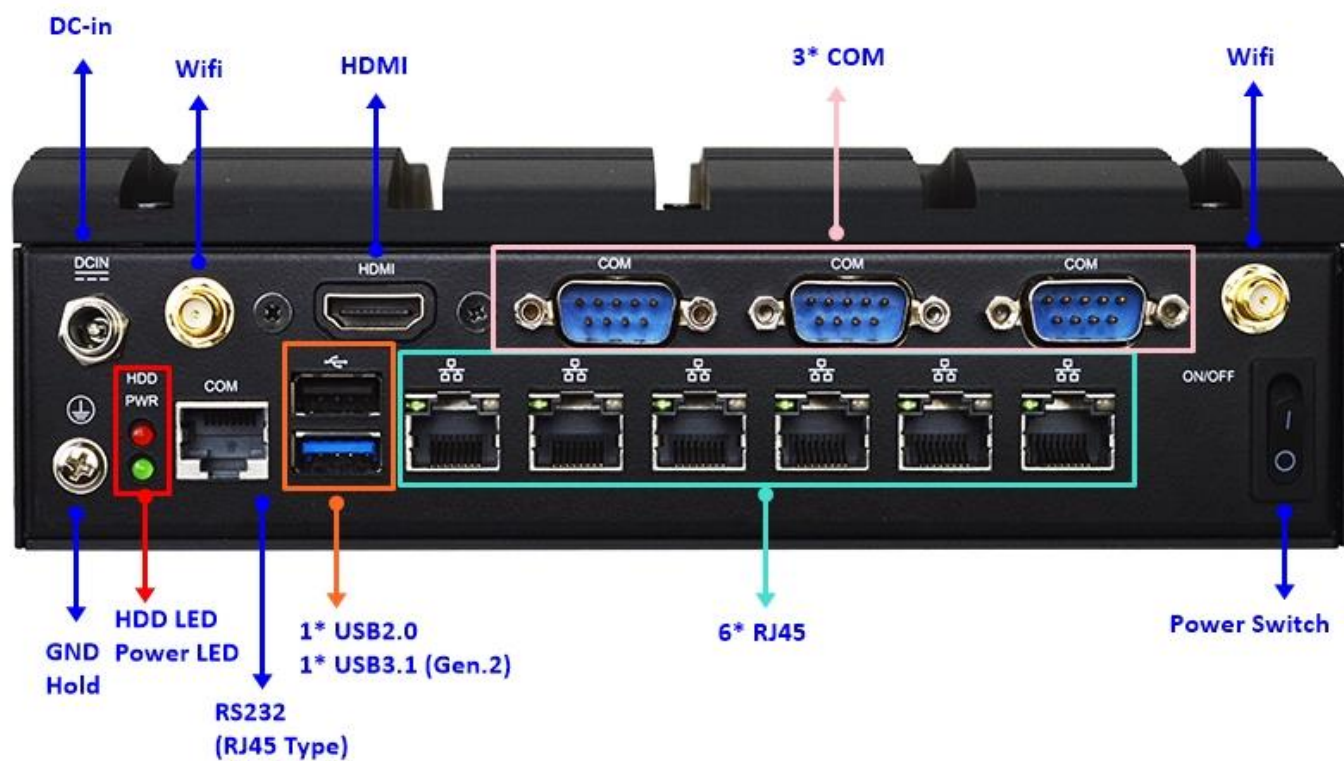
**Release date: 2023-03-17**

## **Notice:**

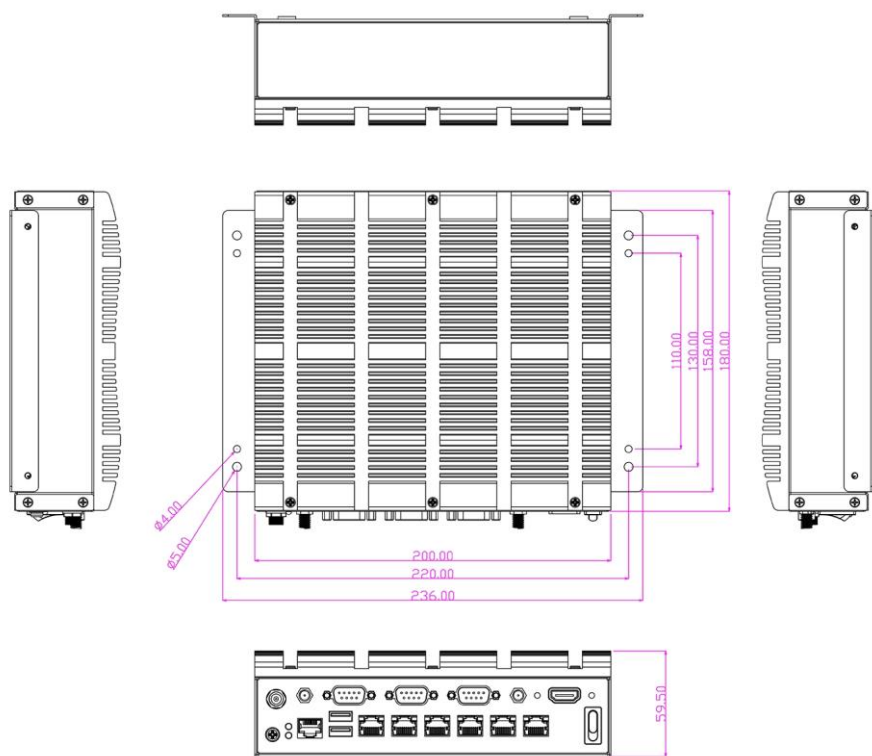
The photos in this file are for illustration purpose only. The model may not be the latest version. Please refer to the product you purchased for actual specification.

## I/O Outlets

### Rear



## Dimension and Outlines



## **I. To Disassemble the Chassis**

1. Locate the screws at the marked spots on top of the system and unscrew them one by one.



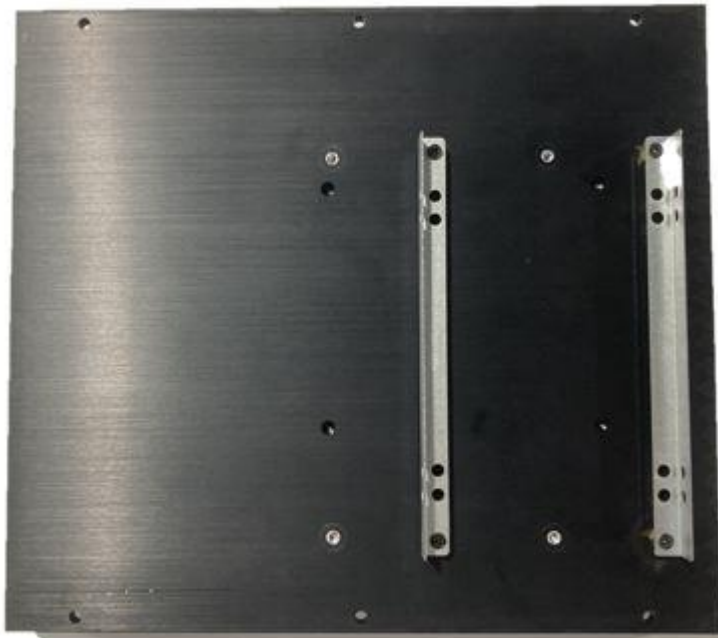
2. Lift the cover up to open the chassis.



3. The overview of the internal structure of the system.



4. The pre-installed HDD racks are at the back of the chassis cover.





## **II. To Install SO-DIMM to the Board**

1. Locate the SO-DIMM slot on the board.



2. Insert the gold-figure side of the compatible SO-DIMM into the slot at a 30 degree angle. See to it that the break of the module fit into the notch of the slot and the golden-finger side should be fully plugged into the slot.

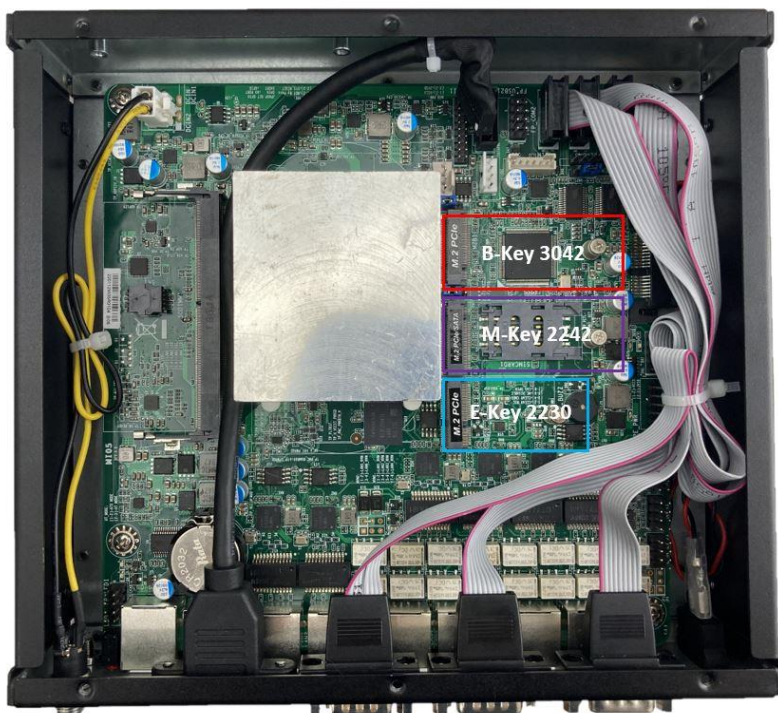


3. Press down to secure the SO-DIMM to the slot. The eject tabs will lock automatically if installing direction is correct.



### **III. To Install M.2 Cards**

1. Locate the M.2 slots on the board. System supports one M.2 E-Key (2230) slot, one M.2 M-Key (2242) slot, and one M.2 B-Key (3042) slot.





2. To install compatible cards, please remove the screws in the marked spots first.



3. Insert compatible M.2 Key cards into the slots. See to it that the golden-finger side should be fully plugged into the slot.



4. Tighten up the screw that's removed before to the marked spot to secure the card.



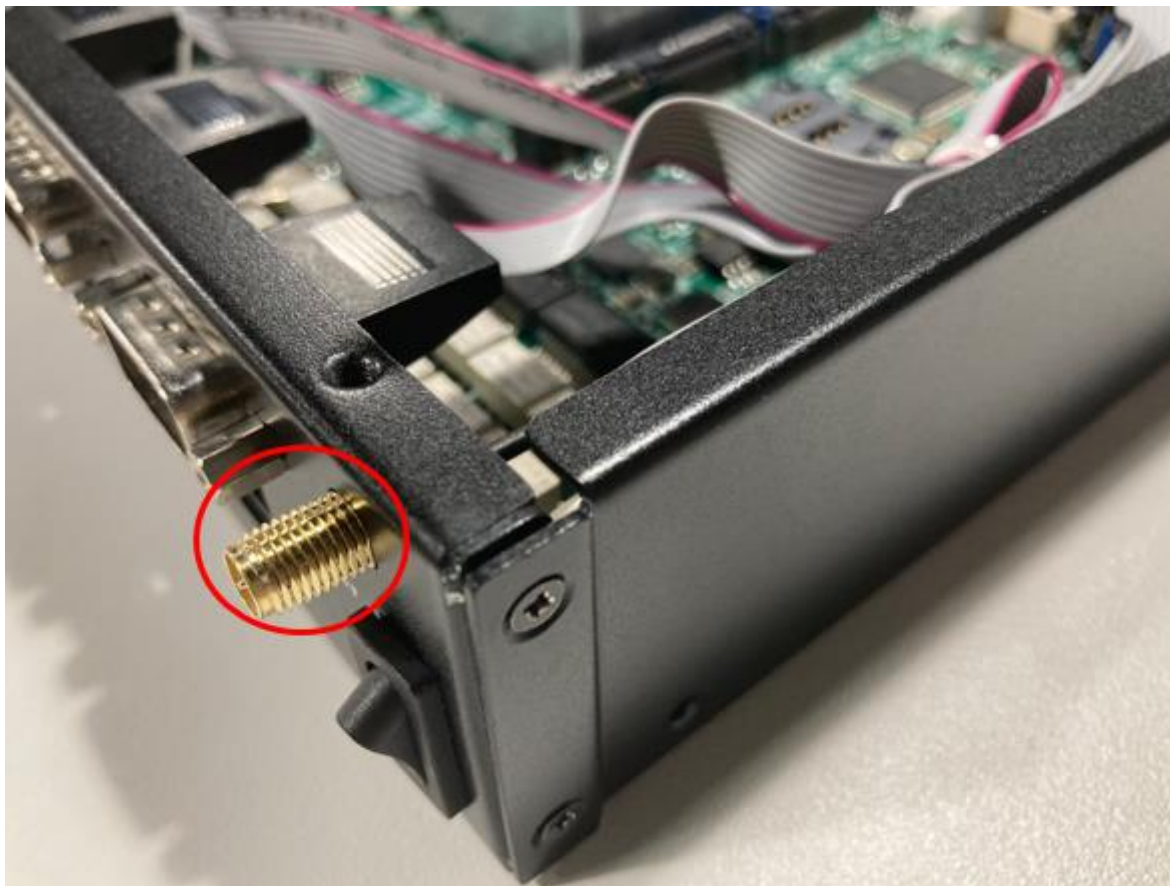
#### **IV. To Install Antenna**

1. Locate the reserved antenna holes on the rear panel. Remove the dust-proof plugs on the marked spots to install the antenna.





2. Push this antenna screw head into antenna hole of the rear panel from the inside out.



2-1



2-2

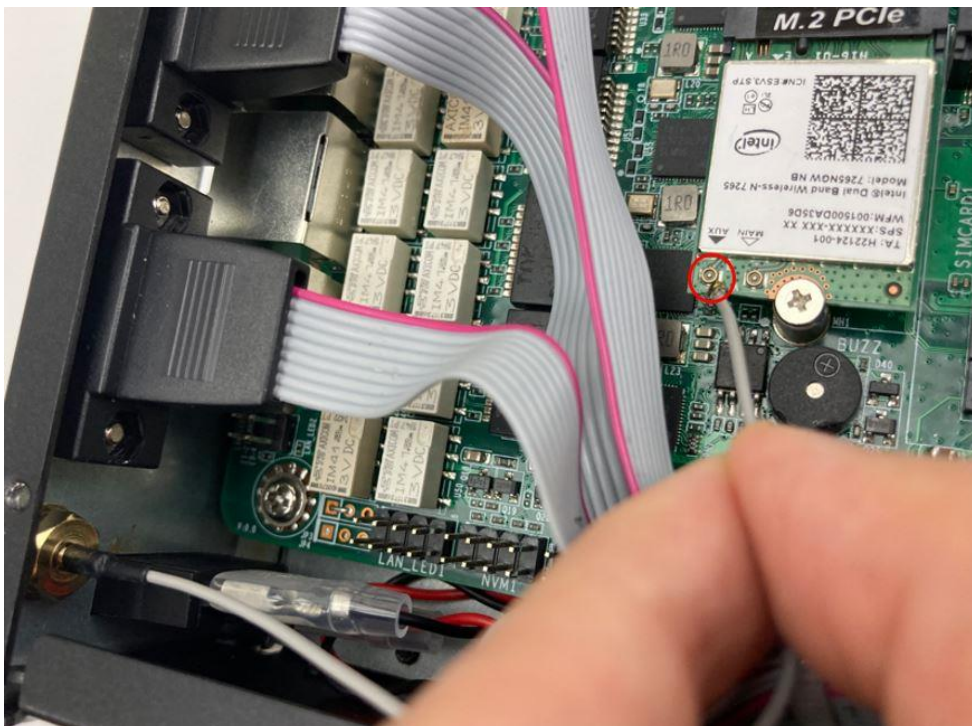


The washer ① & the hexagonal screw nut ②. Push the washer ① through the antenna head.

3. Lock the antenna screw head from the front side of the rear panel with the hexagonal screw nut② and tighten it up.



4. Press the metal hat at the end of the antenna string to corresponding antenna slot on the M.2 E-Key card as shown.





## **V. To Install Hard Disk**

1. Place compatible SATA HDD upon HDD racks on the back of the chassis cover. Tightening the screws marked as shown from the side of the HDD racks to secure the HDD.



2. Plug SATA power-out cable and SATA port cable to corresponding connectors on the board. Plug the other end of the cable into the SATA connector of the HDD as shown.





3. Make sure the SATA port of the HDD is facing the side of rear panel when closing the chassis cover as shown and tighten the 6 screws on the cover. (refer to I-1)



## **VI. To Wall Mount the System**

1. Install wall mount rack to the system by tightening two screws in the marked positions. Then lock the other two screws on the other side in the same way.



2. Wall mount the system by tightening 4 screws in the marked positions on both sides of the wall racks with the choices of large-sized and small-sized screw holes based on the project needs.



## Regulatory Compliance:

### Disclaimer

This QIG is intended to be used as a practical and informative guide only and is subject to change without prior notice. It does not represent commitment from Jetway Information Co., Ltd. Jetway shall not be liable for direct, indirect, special, incidental, or consequential damages arising out of the use of the product or documentation, nor for any infringements upon the rights of third parties, which may result from such use.

### Declaration of Conformity

#### FCC Statement

This equipment has been tested and found to comply with the limits for a Class A digital device, pursuant to part 15 of the FCC Rules. These limits are designed to provide reasonable protection against harmful interference when the equipment is operated in a commercial environment.

This equipment generates, uses, and can radiate radio frequency energy and, if not installed and used in accordance with the instruction manual, may cause harmful interference to radio communications. Operation of this equipment in a residential area is likely to cause harmful interference in which case the user will be required to correct the interference at user's own expense.

***\*Note:** 1. Any changes or modifications not expressly approved by the party responsible for compliance could void the user's authority to operate the equipment. 2. Shielded interface cables must be used in order to comply with the emission limits.*

#### CE Notice

The product described in this QIG complies with all applicable European Union (CE) directives if it has a CE marking. For computer systems to remain CE compliant, only CE-compliant parts may be used. Maintaining CE compliance also requires proper cable and cabling techniques.

