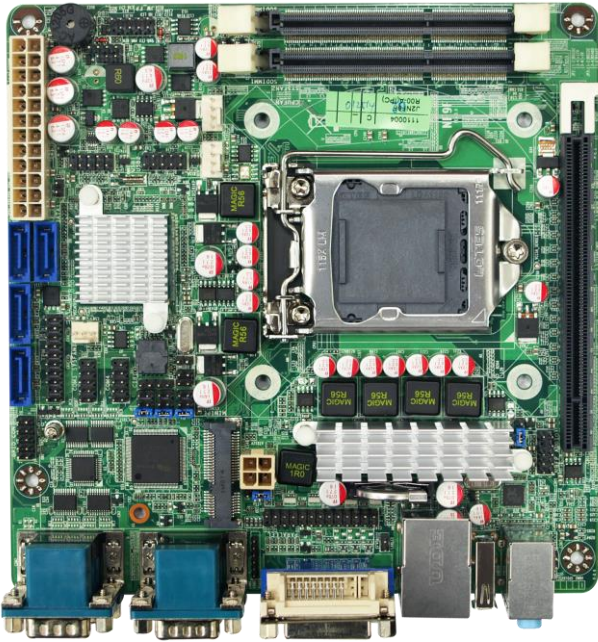
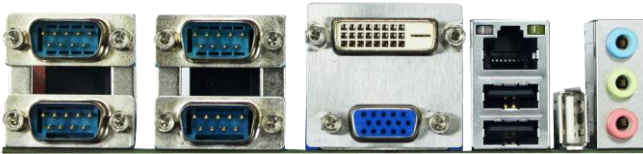


# Mini-ITX Motherboard

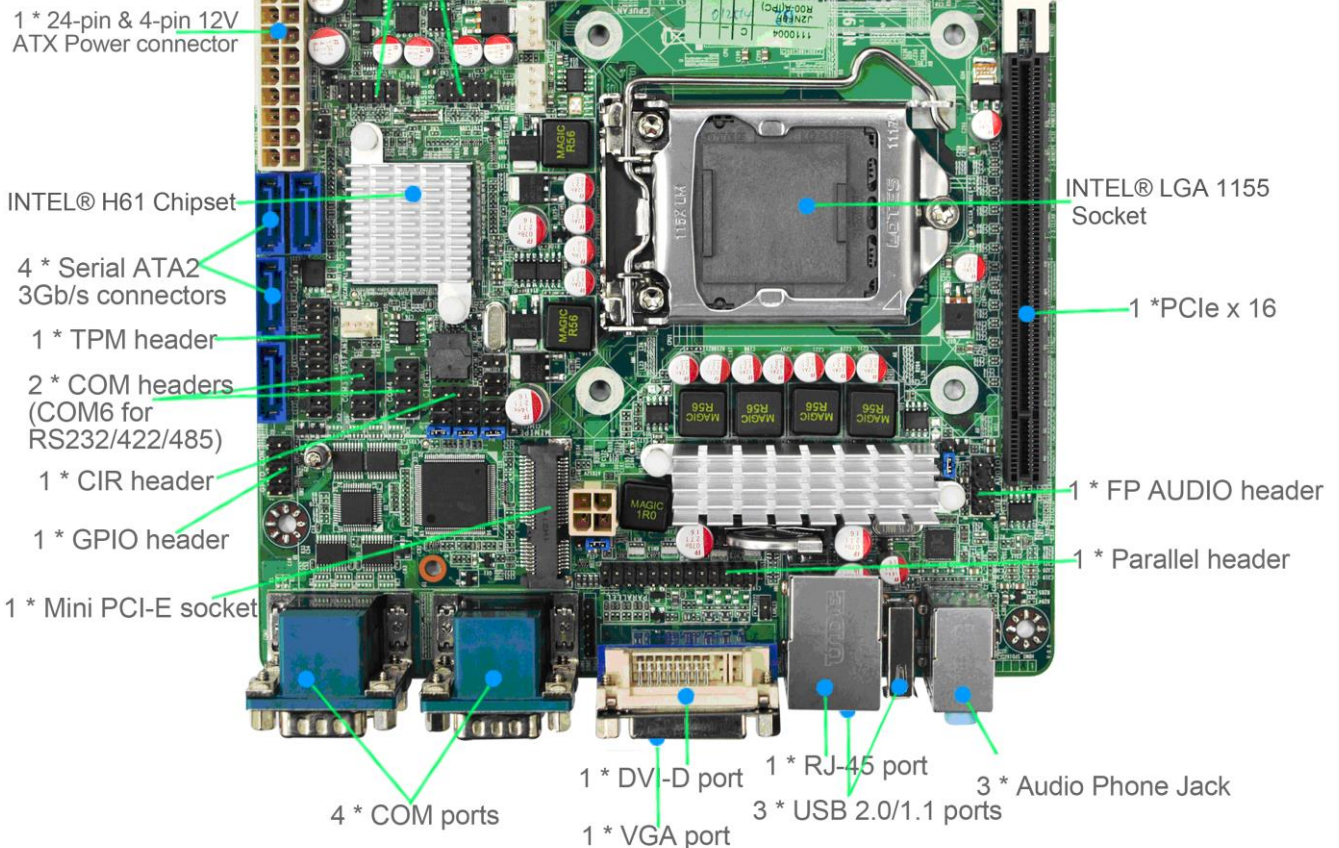
# NF9F-H61



1. Intel® H61 Express Chipset
2. Supports Intel LGA 1155 Socket Core™ i3, i5, i7 & Pentium Processors (max 65W)
3. 2 \* Dual Channel SO-DIMM DDR3-1333/1066 Max. up to 16GB
4. Realtek RT8111EVL Gigabit LAN
5. PCI Express x16 Slot
6. Mini PCI-E Slot
7. 4-port SATAII 3Gb/s
8. Support TPM 1.2 function
9. Support 6 \* COM ports (COM6 for RS232/422/485)
10. DVI-D, and VGA Video Outputs
11. Built-in Watchdog Timer Technology
12. Mini-ITX Form Factor (170mm x 170mm)



2 \* USB 2.0/1.1 headers for 4 USB 2.0 ports      2 \* 1333/1066 Dual CH DDR3 SO-DIMM



<b>Specifications</b>	
<b>Form Factor</b>	
Dimensions	- Mini-ITX (170 x 170mm)
<b>Processor System</b>	
CPU	- Intel LGA 1155 Socket Core i7/i5/i3/Pentium Processor
Core Number	- (by CPU)
Max Speed	- (by CPU)
L2 Cache	- (by CPU)
Chipset	- Intel H61 Express chipset
BIOS	- AMI 32Mb Flash rom
<b>Expansion Slot</b>	
PCI	- 0
Mini-PCIe	- 1 (full size)
mSATA	- 0
PCIe	- 1 x16
CFast Card Socket	- 0
CF Card Socket	- 0
<b>Memory</b>	
Technology	- 2 * DDR3 1333/1066 MHz Dual CH
Max.	- 16GB
Socket	- 2 x SO-DIMM
<b>Graphics</b>	
Controller	- (by CPU)
VRAM	- Shared Memory
VGA	- 1
LVDS	- 0
HDMI	- 0
DVI-D	- 1
DisplayPort	- 0
MultiDisplay	- Yes (Dual Display)
<b>Ethernet</b>	
Ethernet	- 10/100/1000 Mbps
Controller	- GbE LAN: 2 x RTL8111E
Connector	- 1 x RJ 45
<b>SATA</b>	
Max Data Transfer Rate	- 4 x SATAII(3.0Gb/s)
<b>Rear I/O</b>	
VGA	- 1

DVI-D	- 1
HDMI	- 0
DisplayPort	- 0
Ethernet	- 1
USB	- 3 (3 x USB 2.0)
Audio	- 3 (MIC / Line-out/Line-in)
Serial	- 4 (RS-232/422/485 with 5V/12V selectable header)
eSATA	- 0
PS2	- 0
DC-input	- 0
<b>Internal Connector</b>	
USB	- 4 ( 4 x USB 2.0)
PS2	- 0
LVDS / inverter	- 0
VGA	- 0
Serial	- 2 (2 x RS-232 with 5V/12V selectable header)
SATA	- 4 x SATAII (3.0Gb/s)
mPCIe	- 1 (full size)
Parallel	- 1
mSATA	- 0
CIR	- 1
GPIO 8-bit	- 4in / 4 out
Chassis intrusion	- 1
Audio Header	- 1
<b>Watchdog Timer</b>	
Output	- From Super I/O to drag RESETCON#
Interval	- 256 segments, 0,1,2...255sec/min
<b>Power Requirements</b>	
Input PWR	- 12V DC-In (24/4-pin PWR Con)
Power On	AT/ATX Supported - AT : Directly PWR on as Power input ready - ATX: Press Button to PWR on after Power input ready
<b>Certifications</b>	
Certifications	- CE, FCC, RoHS, REACH
<b>Environment</b>	
Temperature	- Operating: 0°C ~ 60°C - Storage: -20°C ~ 85°C
<b>Accessories</b>	

G01-SATA-BK-B-2F	- SATA cable
G01-COM9-30A-1F	- COM Cable
F04-277-1F	- I/O Shield

- For further information please visit the website at <http://www.jetway.com.tw>
- The Specification may be changed without further notice.